

**ADDENDUM NO. 1**  
**Ormsby Mitchel Park – Playground Improvements**  
**Bayer Becker, Inc.**

**08/24/2021**

---

This Addendum forms a part of the Contract Documents and modifies the original Bidding Documents. Acknowledge receipt of this Addendum in the space provided on the Bid Form. Failure to do so may subject the Bidder to disqualification.

**I. DOCUMENT CHANGES AND ADDITIONS**

- **Proposal Bid Schedule**
  - Sheets P-4 & P-5 revised for clarity
  -
- **Site Photographs Provided for reference only**
  - Photos of previous playground provided for reference
  - Photos of current demolition / construction provided for reference

**BID SCHEDULE**  
**GENERAL ORMSBY MITCHEL PARK PLAYGROUND IMPROVEMENTS**  
**FT MITCHELL, KY.**

8/24/2021

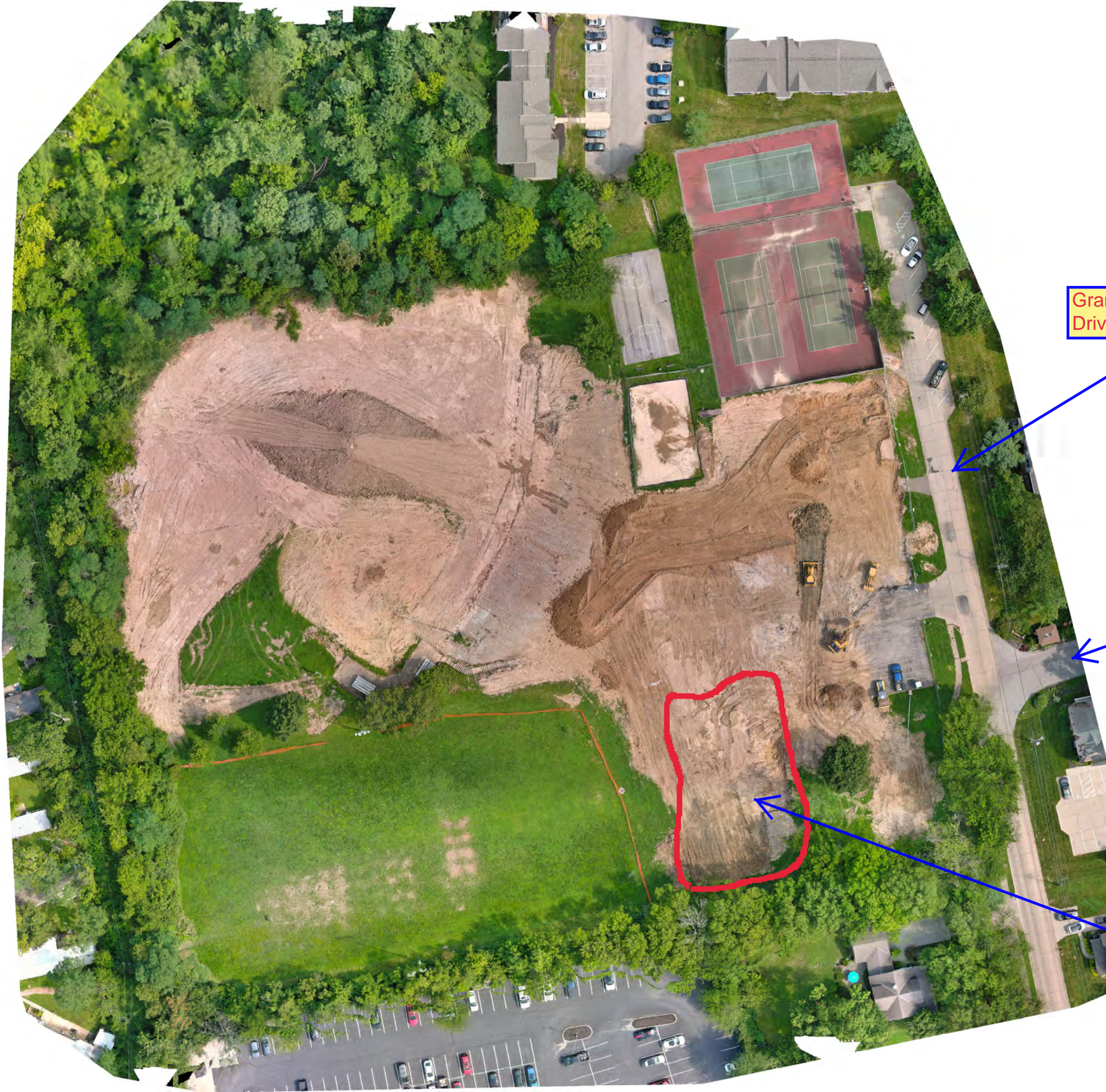
PAY DESCRIPTION	APPROX. QUANTITY	UNIT	UNIT PRICE	SUBTOTAL AMOUNT
<b>GENERAL CONSTRUCTION ITEMS</b>				
MOBILIZATION / FINISH GRADING / OTHER	1	LS		
			<b>SUBTOTAL</b>	<b>\$</b>
<b>PLAYGROUND UNITARY SAFETY SURFACING</b>				
POURED IN PLACE OR SYNTHETIC TURF (Includes Safety Surface, base materials, drainage and tie in to storm system)		SF		
DURABLE BORDER TO CONTAIN SURFACING Concrete curb (if part of the design) 4" Concrete walk w 4" base (if part of the design) Other (if applicable)		LF SF		
			<b>SUBTOTAL</b>	<b>\$</b>
<b>PLAYGROUND EQUIPMENT (DESIGN OPTION 1)</b>				
<b>DESIGN OPTION 1</b> Provide a list of playground equipment and components for Design Option 1 in the proposal. Cost for installed Design Option 1 to be shown here:	1	LS		
			<b>SUBTOTAL</b>	<b>\$</b>
<b>ALTERNATE 'A' - LANDSCAPE BUFFER (Includes soil, amendments, mulch, installantion and warranty)</b>				
DECIDUOUS TREES	5	EA		
EVERGREEN TREES	3	EA		
DECIDUOUS SHRUBS	31	EA		
EVERGREEN SHRUBS	39	EA		
ORNAMENTAL GRASSES	21	EA		
			<b>SUBTOTAL</b>	<b>\$</b>
<b>MISCELLANEOUS (IF ANY)</b>				
			<b>SUBTOTAL</b>	<b>\$</b>

**BID SCHEDULE**  
**GENERAL ORMSBY MITCHEL PARK PLAYGROUND IMPROVEMENTS**  
**FT MITCHELL, KY.**

8/24/2021

<b>BIDDER INFORMATION:</b>		<b>PROJECT TOTAL IN NUMBERS:</b>	
NAME SIGNED		\$	<b>DOLLARS</b>
NAME PRINTED		\$	<b>CENTS</b>
COMPANY			
DATE		<b>PROJECT TOTAL IN WORDS:</b>	
PHONE NUMBER			
EMAIL			
FAX NUMBER			
<b>PLAYGROUND EQUIPMENT (DESIGN OPTION 2)</b>			
Provide Add or Deduct amount (difference between Design Option 1 Subtotal above, if applicable)		<b>ADD(+)</b>	\$
		<b>OR</b>	
		<b>DEDUCT (-)</b>	\$
<b>PLAYGROUND EQUIPMENT (DESIGN OPTION 3) (A third design is not required)</b>			
Provide Add or Deduct amount (difference between Design Option 1 Subtotal above, if applicable)		<b>ADD(+)</b>	\$
		<b>OR</b>	
		<b>DEDUCT (-)</b>	\$





Grandview  
Drive

General Mitchel  
Lane

Approx. location  
of new  
playground



Existing playground as show was removed in summer of 2021, new playground will be in located the same general area.

Existing stairs to remain



Approximate location of new seat wall that will be installed by General Contractor during overall park renovations. Design or install not part of the playground set of plans.

Imagery ©2021 Google, Map data ©2021, Map data ©2021

10 ft

Looking South at General Ormsby Park Playground





00:54

01:44

Photo/video  
taken approx.  
7/23/2021

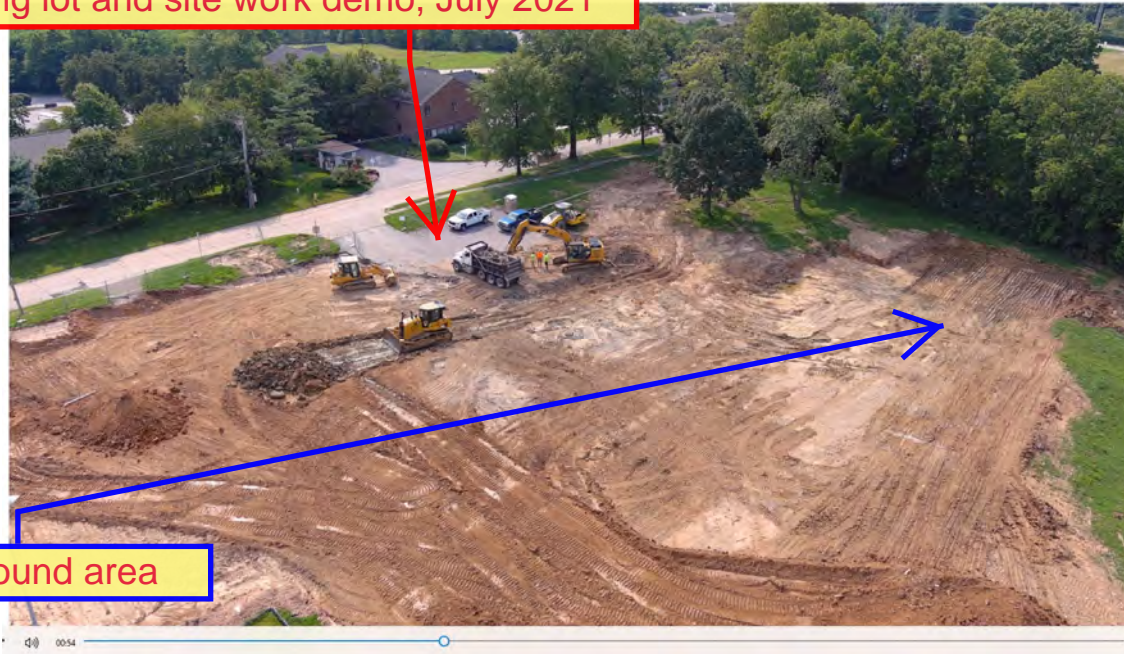
Approx location  
of new  
playground

Hill goes down  
to existing  
soccer field

Ex. stairs to  
remain are just  
out of view



Parking lot and site work demo, July 2021



Playground area

Previous playground edging timbers at south end of old playground, photos from March 2021



Playground structures removed, June 2021



Soccer field area below









