



CITY OF FORT MITCHELL, KENTUCKY
INVITATION TO BID FOR
DIXIE HIGHWAY REMOVAL AND REPLACEMENT
OF STREET TREES

Bid Due October 16, 2023 11:00 a.m.
2355 Dixie Highway, Fort Mitchell, KY 41017

The City of Fort Mitchell, Kentucky, will accept sealed bids for Dixie Highway Corridor Removal and Replacement of Street Trees. Copies of the specifications may be obtained on our website, www.fortmitchell.com.

TABLE OF CONTENTS

Enclosed

I. Instructions to Bidders

II. General Conditions

III. Special Conditions

IV. Technical Specifications

V. Vendor Insurance Requirements

VI. Bid Pricing Sheet

I. INSTRUCTIONS TO BIDDERS

1. Each bid must be signed by the bidder with his/her usual signature. Bids by a partnership, corporation, or limited liability company must be signed by a representative authorized to legally bind the entity, followed by the signature and title of the person signing.
2. Bids must be received prior to the specified time of closing as designated in the invitation. Bids received late will be returned unopened to the bidder.
3. Bids containing erasures or corrections thereon will be rejected unless said erasures or corrections are noted over the initials or signature of the bidder.
4. References in the Technical Specifications describing the material, supplies, or services required of a particular trade name, catalog or model number are made for descriptive purposes to guide the bidder in interpreting the type of material or supplies or nature of the work described. They should not be construed as excluding offers on other type of materials and supplies or of performing the work in a manner other than specified. However, the bidder's attention is called to Paragraph 6 of the *General Conditions* which must be strictly adhered to.
5. Bids shall include a completed Bid Pricing Sheet, along with any other materials specified in the Special Conditions. Bids are to be mailed to or delivered to the Office of the City Clerk, City of Fort Mitchell, 2355 Dixie Highway, Fort Mitchell, Kentucky 41017. **ALL BIDS MUST BE RECEIVED ON OR BEFORE Monday, October 16, 2023 at 11:00 a.m.** Bids will be accepted and publicly opened at that time. Bids shall be sealed in an envelope, which is clearly marked on the exterior **Dixie Highway Removal and Replacement of Street Trees Phase V**.
6. Interested bidders are strongly encouraged to review the Dixie Highway Trolley Line Tree Removal and Replacement Plan that was completed in May 2018. The plan is available on the City Website at https://fortmitchell.com/wp-content/uploads/2018/09/18-0430-Tree-Removal-Replacement-Plan_2-sided.pdf
7. The Tree Board will review all submissions and anticipates awarding the bid in mid-October. Once a contractor is chosen, they may be required to attend a council meeting with members of the Tree Board to present their plan to complete the project.
8. Installation of trees shall be completed during the **fall 2023** time period, prior to the soil freezing, or December 15 whichever comes first.
9. The City's sales tax exemption status may not be used by the bidder to acquire materials or supplies on a sales tax-exempt basis. Any sales taxes or other taxes incurred by the bidder remain the responsibility of the bidder. It is assumed that all such costs incurred by any bidder are included in his bid price.

II. GENERAL CONDITIONS

1. The City reserves the right (a) to reject any and all bids; (b) to waive any informality or irregularity in any bids; (c) to negotiate with the bidder submitting the apparent lowest and best bid; (d) to use its discretion in determining which, if any, bid it intends to accept; (e) to accept or reject any item or group of items in the bid.
2. In case of error in extending the total amount of the bid, the unit price will govern.
3. The City of Fort Mitchell's payment terms are net-30 (i.e., all invoices will be paid within 30 days).
4. In case of default by the bidder or contractor, the City of Fort Mitchell may procure the articles or services from other sources and hold the bidder or contractor responsible for any excess cost occasioned thereby.
5. Prices shall be stated in units of quantities specified.
6. Whenever a reference is made in the specifications or in describing the materials, supplies or services required, or a particular trade name, manufacturer's catalog, or model number, the bidder, if awarded a contract, will be required to furnish the particular item referred to in strict accordance with the specifications or description unless a departure or substitution is clearly noted and described in the proposal by the bidder.
7. The bidder, if awarded an order or contract, agrees to protect, defend, and save harmless the City against any demand for the use of any patented materials, process, article, or device, that may enter into the manufacture, construction, or form a part of the work covered by either order or contract, and the bidder further agrees to indemnify and save harmless the City from suits or actions of every nature and description brought against it, for or on account of any injuries or damages received or sustained by any party or parties, by or from any of the acts of the contractor, its employees, servants, or agents.
8. Samples, when requested, must be furnished free of expense prior to the opening of bids and if not destroyed will, upon request, be returned at the bidder's expense.
9. Terms and conditions, unless stated otherwise herein, are to be effective for one year from the date of bid acceptance.
10. All bids shall remain valid for a period of thirty (30) days after bid opening unless a longer period is otherwise stated herein.
11. Bidder is required to obtain a City of Fort Mitchell Occupational License within ten days of contract award.

12. All federal, state, and local law requirements must be followed.
13. Bids will be evaluated and awarded on the following basis (as marked):
 - Lowest and Best Bid.
 - Lowest Evaluated Bid Price. The objective measurable criteria for this evaluation are enclosed.
14. “Responsible bidder” means a person who has the capability in all respects to perform fully the contract requirements, and the integrity and reliability which will assure good faith performance.
15. Unless otherwise indicated, any Special Conditions are enclosed. A conflict between Special Conditions and General Conditions shall be construed in favor of the Special Conditions.
16. Unless otherwise indicated, the Technical Specifications for this bid are enclosed.
17. Unless otherwise indicated, the applicable Vendor Insurance Requirements for this bid are enclosed.
18. Pursuant to KRS 45A.490 to 45A.494, prior to a contract being awarded to the lowest and best responsible and responsive bidder whose bid meets specifications, a resident bidder of the Commonwealth shall be given a preference against a nonresident bidder registered in any state that gives or requires a preference to bidders from that state. The preference shall be equal to the preference given or required by the state of the nonresident bidder. A copy of KRS 45A.490 to 45A.494 is enclosed and made a part of this Invitation to Bid. Any bidder wishing to claim a preference as a resident bidder must complete the enclosed affidavit.
19. Unless otherwise indicated, the successful bidder will be required to enter into a Contract with the City of Fort Mitchell, which is enclosed.
20. Contractors shall not discriminate on the basis of race, color, religion, sex, age forty (40) and over, disability, veteran status, or national origin. The contract to be executed by the successful bidder will contain the non-discrimination language required by KRS 45.570.

- End of Section -

III. SPECIAL CONDITIONS

The City of Fort Mitchell is soliciting sealed bids for removal and replacement of street trees on Dixie Highway Corridor.

1. BID PROCEDURE

- The bid shall be submitted using the attached bid sheet.
- If there are technical questions, contact Kris Stone, Green Vision Professional Services (the City's agent) at kstone@greenvisionservices.com or 859-380-3613.
- Read and understand all the Technical Specifications (call if clarification is needed).
- **Bids should be prepared for the species and sizes indicated in this request.**
Species included in this request may not be readily available from local retailers. Interested bidders are strongly encouraged to source materials prior to submitting a bid. Variances from the desired sizes or species must be noted in the bid and reflected in proposed costs. The City or its agent may confirm with the interested bidder that due diligence was conducted in sourcing the requested material in preparation of this bid. The City reserves the right to reject any bids that have not attempted to properly source materials or noted variances.
- Furnish three (3) references as specified.
- Read, completely fill out, sign and return the City of Fort Mitchell's Bid Pricing Sheet.

Return all requested information to the City Clerk's Office by the Date and Time indicated.

2. REFERENCES

Three (3) references shall be included with the bid. These references must be from past or current contracts preferably with municipal and/or commercial scale projects. They are to include

- Contact Person Name and Company
- Contact Person's telephone number

- End of Section -

IV. TECHNICAL SPECIFICATIONS

1. **Work to be performed:** The removal and replacement of street trees along the Dixie Highway corridor. For this phase, nine (9) mature tree will be removed twenty-two (22) trees planted. Species requested include: (2) American hornbeam; (2) kousa dogwood; (1) Amur maackia; (3) Redbud; (5) Chinese pistache; (5) Arnold buckeyes; (4) magnolias.
2. **Work location areas and types:**
 - a. **Zone 1: Woodlawn Ave to Beechwood** – Remove 2 hawthorns and replace with one hornbeam and two kousa dogwood. Replace 1 dead Amur maackia sapling.
 - b. **Zone 2: Across from Ft Mitchell Baptist Church** – Remove 4 large Pear trees. Add 1 hornbeam, 3 redbuds, and 5 pistache.
 - c. **Zone 3: Between Highland and Burdsall** – Remove 3 large Pear trees and replace with 5 arnold buckeye and 4 magnolias.
3. **Contractor experience and certification requirements:** We would like the awarded contractor to perform all work requested. For the tree removal work, the contractor must have an ISA Certified Arborist on-site while work is being performed.
4. **Work guidance:** Conceptual planning for this project is guided by the Dixie Highway Corridor Tree Removal & Replacement Plan completed in 2018. This plan is available on the City website at https://fortmitchell.com/wp-content/uploads/2018/09/18-0430-Tree-Removal-Replacement-Plan_2-sided.pdf. Additionally, site-specific plans for the work locations will be made available to bidders; see Attachment A. Contractor must meet with the City or their agent to determine final species selection and mark planting locations. Trees for removal will be discreetly marked by the City.
5. **Scope of Work:** To provide all supervision, material, labor, equipment, service, operations and expertise required to deliver, locate, remove, plant and guarantee street trees in the City of Fort Mitchell as specified herein. Contractor has responsibility to:
 - a. Furnish, transport and plant trees.
 - b. Remove select trees and grind stumps.
 - c. Reserve work space along streets.
 - d. Contact 811 to mark utilities prior to planting.
 - e. Mark tree planting sites.
 - f. Excavate soil, plant trees, backfill and water.
 - g. Furnish and place mulch.
 - h. Remove excess material and clean-up site.

- i. Guarantee trees for one year and make appropriate replacement planting.
 - j. Keep work site safe at all times.
 - k. Any work incidental to above.
6. **Materials Specifications:** Mention of any product name neither constitutes an endorsement of that product nor excludes the use of similar products meeting specifications.
- b. **Nursery Stock:** May be balled & burlapped or plants grown in containers. All trees healthy, vigorous and well grown, showing evidence of proper root and top pruning, single trunked, high branched specimens suitable for use along streets. All trees 2.0-inch caliper unless otherwise noted. All plants meet American Nursery Stock Standard Z-60.1 for top grade. Trees of the same species to be installed shall be the same size, height, and form. Label attached to each tree at nursery indicating botanical name and common name. Labels remain on trees for one year. The City of Fort Mitchell has final approval of species or variety used and nursery from which trees are obtained.
 - c. **Root Balls & Burlap:** Ball shape and size conform to Z-60.1. Only rottable burlap and rottable rope permitted. Root balls are adequately protected at all times from sun, heat, freezing and drying. The City will reject any cracked or manufactured root balls. Container stock is acceptable if it conforms to Z-60.1 standards and its size equals or exceeds 2 inch caliper.
 - d. **Mulch:** Dark colored, processed hardwood bark mulch is acceptable.
 - e. **Soil Amendments:** Products such as Biochar, Hydrogel A1000, Soil Moist, Supersorb C, or Terra-Sorb may be incorporated as per label direction into all backfill. Contractor provides a copy of label and manufacturer's directions for product chosen at the time the list of nursery suppliers is submitted to the City.
7. **Tree Removal Work Procedures:** Removals include all operations necessary to safely remove the assigned trees. No trees or trunks are felled onto pavement. Work includes removal of basal sprout and brush and weeds within three feet of the trunk. The tree stump will be ground out to a depth of at least twelve (12) inches below the normal surface level including all surface roots. Immediately after grinding each stump, the grindings must be removed from the work area. Adjacent sidewalks, lawns, streets, and gutters will be cleaned. Unless a replacement tree is planned for the immediate area, backfill consisting of clean earthen soil should be used to fill the cavity, free of debris, to normal ground level and seeded with an approved seeding mix. Do not backfill with wood chips. All labor, supervision, equipment, materials, and supplies necessary for the execution of this work must be provided for by the contractor at no additional cost to the city. All debris disposal must be provided by the contractor at no additional cost to the city. The Contractor will be required to follow the ANSI Z-133 Standards for tree worker safety. Where utility lines are present and as needed per regulations, contractor is responsible for coordinating tree removal with Duke Energy or other controlling utility company.

8. Tree Planting Work Procedures:

- a. **Source of Supply:** The Contractor submits in writing to the City or their agent complete and detailed information concerning the source of supply for each item of plant material specified in the planting list.
- b. **Tree Location:** Before nursery orders are finalized, the City or their agent and the Contractor lay out the location of all planting holes with suitable marks. Marks are paint and flags to be provided by contractor.
- c. **Underground Utilities:** Contractor ensures that underground gas, electric, water, telephone, cable television, telecommunication, sewer and all other such underground utility lines are marked by respective agency or company at least 48 working hours before planting.
- d. **Tree Location Adjustment:** After underground utilities have been marked, a follow up inspection is performed by Contractor and the City or their agent to adjust tree locations and to obtain final counts of trees to be planted.
- e. **Delivery:** Trees transported with adequate protection. Trees covered with tarpaulin during transit or transported in closed truck. Trees in leaf sprayed before shipping with "Wiltpruf" or other antidesiccant approved by the City or their agent. The City reserves the right to reject trees improperly shipped.
- f. **Temporary Storage:** Root systems of trees not immediately planted after delivery to be adequately protected by mulch or heeling in and watering until planting occurs. Contractor assumes all risk and expense of temporary storage. The City reserves the right to reject trees improperly stored.
- g. **Planting Holes:** Hand dug or ground out with stump grinder or trencher. Dug to a diameter 24 inches more than rootball diameter. Depth should be no greater than depth of rootball to ensure that the rootflare will be correctly situated just above the soil; locating the flare may require the removal of some soil in the container or ball, depending on nursery quality. Dug with vertical, rough sides and flat, rough bottom. Dug only on day tree is planted. Augers not allowed. Contractor makes all holes safe until tree is planted and mulched.
- h. **Surplus Excavation:** Removed and disposed of by Contractor at their expense.
- i. **Planting Procedure:** Containers removed before placing tree in hole. Wire baskets may be left on root ball, but must be cut to a lower horizontal ring at least halfway down the rootball to eliminate the possibility of wire becoming a tripping or puncture hazard. All ropes, twine, and strapping material removed from the trees and the job site. Burlap on top of root ball cut off and removed from the job site. Sides of burlap cut in at least 10 places around the ball to encourage outward growth of roots. Ends of broken or damaged roots over 1/4 inch in diameter pruned with a clean cut, removing only the injured portion, as well as pruning to release any circling roots. Trees should be placed to ensure that the rootflare will be correctly situated just above the soil. Trees with forked top oriented with main forks parallel to the street. Tree trunks kept vertical in all directions.
- j. **Backfill:** Planting holes backfilled with shredded or pulverized soil ground out

from planting holes and mixed properly with any amendments used. Backfill tamped lightly as it is placed into hole to eliminate air pockets.

- k. **Top Pruning & Wound Treatment:** Pruning done to fix any damaged branches. Pruning done according to Part 3.5 (Young Tree Pruning) of ANSI A300 Standards and instructions of the City or their agent. Trees pruned to clear pedestrians, vehicles, and view to vehicles as much as possible. Accidental damage during planting not great enough to warrant branch removal or tree replacement promptly traced according to recognized horticultural practices. No wound dressing used.
- l. **Mulching:** Mulch placed loosely around trees within 24 hours after planting to uniform depth of four (4) inches and a diameter of four (4) feet where possible. Mulch shall not be placed directly against tree trunks.
- m. **Watering:** Done thoroughly to settle backfill at planting time. Contractor may use semi-permanent supplemental watering systems installed at ground level, such as Ooze Tube and Tree Diaper, but is responsible for maintaining these systems. The City is not responsible for damage to the systems.
- n. **Wrapping & Staking:** Trees are neither wrapped nor staked, unless specified by the City or their agent during the guarantee period. If Contractor provides staking, it must be a below-ground system that is biodegradable. All staking and guying done to ANSI standards. At the direction of the City or their agent, stakes and wrapping are removed by Contractor at the end of the guarantee period. Contractor bears the cost of wrapping and staking.
- o. **Supervision:** Contractor consults with the City or their agent concerning details and scheduling of all work. Contractor has a competent person in charge of work at all times to whom the City or their agent may issue directions and who is authorized to accept and act upon such directives.

9. Inspections:

- a. **Nursery inspection:** The City or their agent, at its discretion, inspects and tags nursery stock purchased under this contract before digging. Tags remain on trees until final inspection is made. Contractor pays transportation costs for the City representative doing inspection and tagging. Alternatively, if the nursery source is known and approved, photographs of the selected and tagged trees may be submitted to the City or their agent.
- b. **Planting Inspection:** The City or their agent, at its discretion, inspects planting operations and temporarily stored trees.
- c. **Guarantee Period Inspection:** The City or their agent inspects planting work to verify completion and begin the guarantee period. Contractor requests this inspection in writing at least ten (10) days before its scheduled date. After inspection, the City or their agent notifies Contractor in writing of date of beginning of guarantee period or of deficiencies to correct before guarantee period begins.

- d. **Correction Inspection:** Two months before end of guarantee period, the City or their agent inspects work and notifies Contractor of replacements and other corrections required to make work acceptable.
 - e. **Final Inspection:** At end of guarantee period, the City or their agent inspects trees to determine final acceptance. Contractor requests this inspection in writing at least ten (10) days before its scheduled date.
 - f. **Other Inspections.** The City or their agent reserves the right to inspect on-site work at any time without notice.
10. **Guarantee:** Contractor guarantees that all plants remain alive and healthy until the end of a one (1) year guarantee period.
- a. **Tree Replacement.** During the guarantee period, Contractor immediately removes, then replaces during the next appropriate planting season, as specified, and at their expense, any dead trees and any trees, that in the opinion of the City or their agent, have become unhealthy or unsightly or have lost their natural shape due to dead branches, improper pruning or maintenance, or any other cause due to the Contractor's negligence, or weather conditions.
 - b. **Tree Support.** Contractor straightens and guys, if necessary, any leaning trees, bearing the entire cost. Guy wires, stakes and wrapping are removed by Contractor after the next growing season.
 - c. **Future Guarantee.** Each replacement tree is guaranteed in a like manner for one year from the date the replacement tree is planted.
 - d. **City-Requested Replacement.** At the City's discretion, Contractor, following these specifications, replaces any plant killed or damaged beyond repair by vandals, vehicular accident, or other causes beyond Contractor's control. The City will bear cost of these replacements at specified bid rate.
11. **Bid information:** Contractors should contact Kris Stone of Green Vision Professional Services (kstone@greenvisionservices.com or 859-380-3613), the City's agent for this project to request more information or ask technical questions. No pre-bid site meeting will be held.
12. **City reserves right:** To revise bid quantities for tree planting and/or removal to conform to budget with awarded bidder.

- End of Section -

V. VENDOR INSURANCE REQUIREMENTS

Prior to commencement of your services, you must provide the city with a certificate of insurance evidencing the following insurance coverage. **Any and all liability coverage shall name the City of Fort Mitchell as Additional Insured on a primary and non-contributory basis. A satisfactory certificate of insurance evidencing the coverage outlined above shall be provided before any services are rendered.**

- Commercial General Liability Insurance on ISO form CG00011001 (or a substitute providing equivalent coverage). The limit shall not be less than \$1,000,000 per occurrence. If you are providing construction services, you must use additional insured endorsements CG20100704 AND CG20370704.
- Comprehensive Owned And Non-Owned Automobile Liability Insurance with a minimum combined single limit of \$1,000,000.
- Workers' Compensation Coverage specific to the State of Kentucky.
- Professional Liability / Errors or Omissions Coverage in the amount of \$1,000,000 per occurrence (required for professional services, e.g., legal, architectural, etc.).
- Commercial Umbrella Liability Policy with a minimum limit of \$1,000,000 (required for services involving pyrotechnics, mechanical amusement devices, inflatable amusement devices, animals of any type (including petting zoo or pony rides), or any other services in the discretion of the City).
- Liquor Liability Coverage with a minimum limit of \$1,000,000 (required for services involving the sale of alcohol).
- Other:
- No insurance requirement.

- End of Section -

VI. BID PRICING SHEET

Total Bid for Removal & Replacement of Street Trees \$ _____

Price for 1 year of Watering and Maintenance \$ _____

Supplemental Watering is required if less than 1” of rainfall occurs per week from April 1 to Oct 31st. Rainfall amounts should be based on CVG rain gauge. *(This is an optional task the City may elect to include as part of the planting project)*

1. Zone 1: Woodlawn Ave. to Beechwood

Number of trees identified for removal 2 (11” DBH Hawthorn)
(one at the corner of Woodlawn and the other at 2274 Dixie)

Cost for tree removal:

Price per tree _____
Total cost _____

Number of locations identified for dead-loss replacement 1

Location	Tree species*	Quantity	Price per tree
Corner	American hornbeams (<i>Carpinus caroliniana</i>) 'Autumn Fire'	1	
2274 Dixie Hwy	Kousa Dogwood (<i>Cornus kousa</i>)	2	
Beechwood Rd (Dead-loss)	Amur maackia (<i>Maackia amurensis</i>)	1	

Zone 1 - Total Cost** _____

2. Zone 2 - Across from Ft Mitchell Baptist Church

Number of trees identified for removal 1 (13" DBH Pear tree)
 3 (25" DBH Pear tree)

Cost for tree removal:
 Price per tree _____
 Total cost _____

Location	Tree species*	Quantity	Price per tree
2318 Dixie Hwy	American hornbeam (<i>Carpinus caroliniana</i>) 'Autumn Fire'	1	
2326 Dixie Hwy	Redbud <i>Cercis canadensis (tree form)</i>	3	
2328 Dixie Hwy	Chinese pistache (<i>Pistacia chinensis</i>)	5	

Zone 2 - Total Cost** _____

3. Zone 3 - Between Highland and Burdsall

Number of trees identified for removal 3 (23" DBH Pear tree)

Cost for tree removal:
 Price per tree _____
 Total cost _____

Location	Tree species*	Quantity	Price per tree
2360 Dixie Hwy	Sweetbay magnolia (<i>Magnolia virginiana</i>) tree-form	3	
2362 Dixie	Arnold Buckeye (<i>Aesculus x arnoldiana</i>) 'Autumn Splendor'	5	
2364 Dixie Hwy	Sweetbay magnolia (<i>Magnolia virginiana</i>) tree-form	1	

Zone 3 - Total Cost** _____

***Substitutions in species and cultivar and/or quantity must be approved by the City or its agent.**

****Cost to include one-year guarantee.**

Non-Collusive Bid Statement: The undersigned bidder, having fully informed himself regarding the accuracy of the statements made herein, certifies that: (1) The bid has been arrived at by the bidder independently and has been submitted without collusion with, and without any agreement, understanding, or planned common course of action with any other vendor of materials, supplies, equipment, or services described in the bid, designed to limit independent bidding or competition, and (2) The contents of the bid have not been communicated by the bidder or its employees or agents to any person not an employee or agent of the bidder or its surety on any bond furnished with the bid, and will not be communicated by any such person prior to the official opening of the bid.

Signature of Authorized Official

Name and Title (printed)

Legal Name of Business

Address

Address

Telephone Number

Date

Affix seal below if bid is by corporation.

This seal was herewith affixed in the presence of:

Signature _____ Title _____

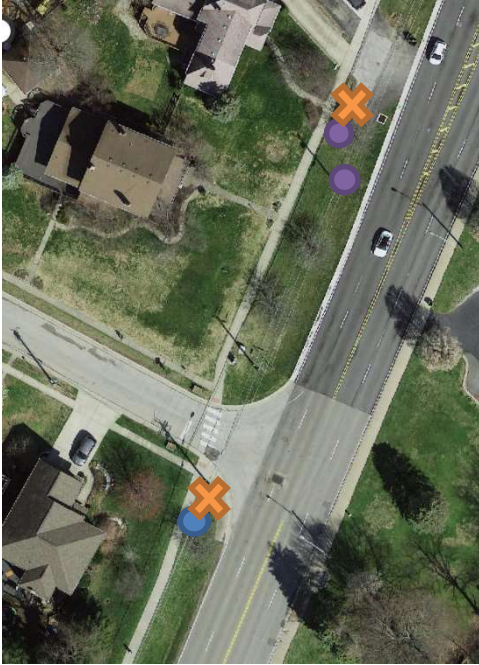
- End of Section -

Attachment A. Work Site Locations

Areas to be included in the replacement and planting plan are along Dixie Highway in Ft. Mitchell, beginning around Beechwood Road in the north and extending down to Burdsall Ave. Total of 14 tree proposed for removal and a total of 27 trees proposed for planting in this high-profile area of the city.

- Zone 1 – Yellow Circle
- Zone 2 – Orange Circle
- Zone 3 -Green Circle



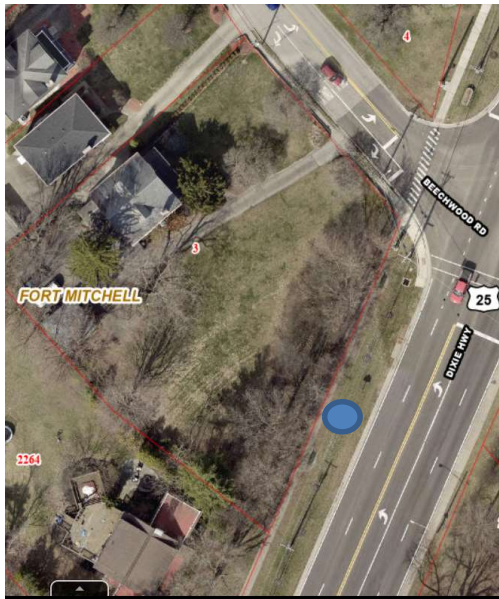


ZONE 1: SOUTH CORNER OF WOODLAWN

Remove: 2 hawthorn trees (orange X)

Add:

- - 1 American hornbeams (*Carpinus caroliniana*) 'Autumn Fire'
- - 2 Kousa Dogwood (*Cornus kousa*)



ZONE 1: CORNER OF BEECHWOOD RD

Infill the 3rd planting location from the corner where a tree planted in 2020 died and was removed.

Replace Dead:

- - 1 - Amur maackia (*Maackia amurensis*)



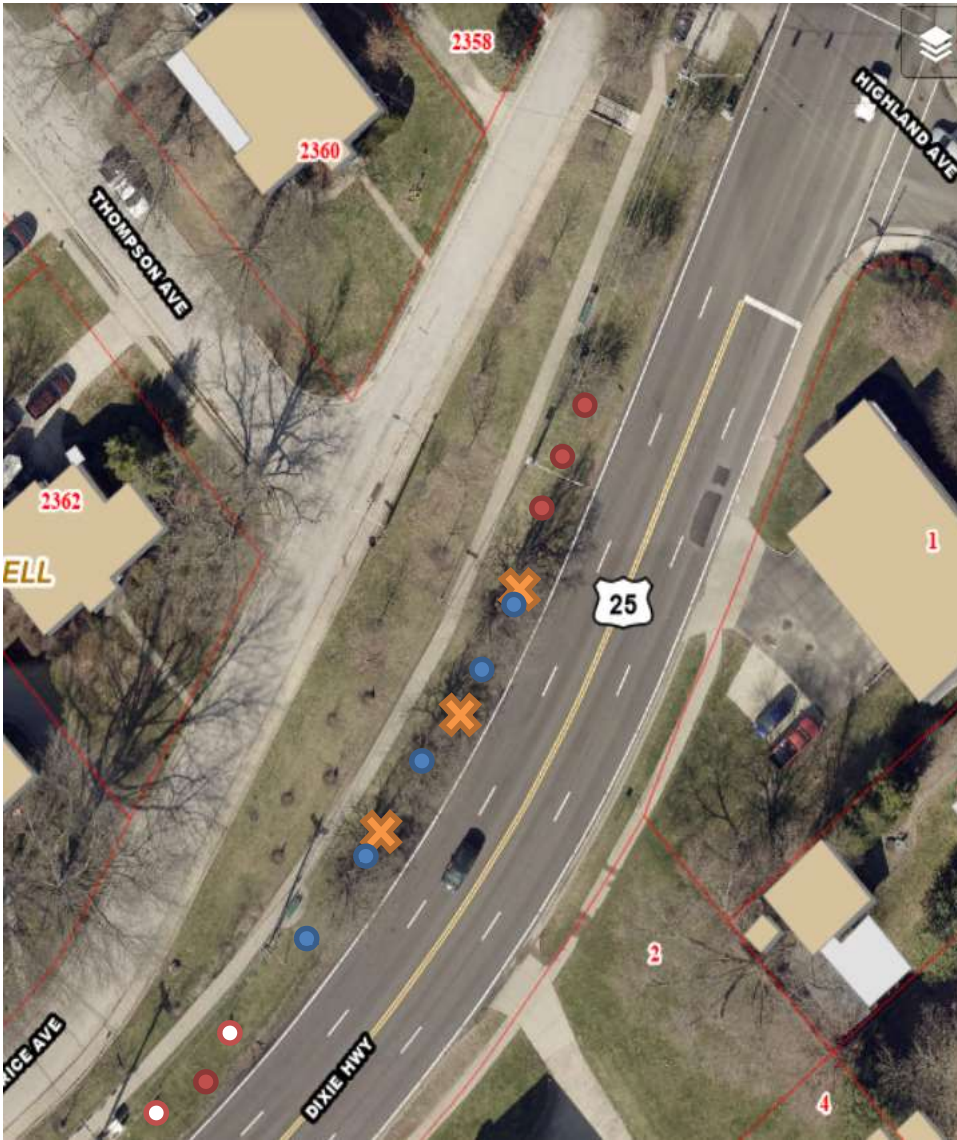
ZONE 2: ACROSS FROM BAPTIST CHURCH

Remove: 4 large pear trees (orange X)

Add:

- - 1 hornbeam (*Carpinus caroliniana*) 'Autumn Fire'
- - 3 redbuds *Cercis canadensis* (tree form)
- - 5 Chinese Pistache (*Pistacia chinensis*)

ZONE 3: SOUTH OF HIGHLAND INTERSECTION



Remove: 3 pear trees between sidewalk and Dixie (orange X)

Add:

- 4 - Sweetbay magnolia (*Magnolia virginiana*). Add one with existing 2 (○) magnolias.
- 5 - Arnold Buckeye (*Aesculus x arnoldiana*) 'Autumn Splendor'.