



# City of Fort Mitchell



MAP 01



1840 Simon Kenton Way  
Covington, KY 41011  
859.331.8980  
Office hours M-F 8-5  
[www.linkgis.org](http://www.linkgis.org)

Date: 3/5/2024

This GIS data are deemed reliable and every effort has been made to ensure their accuracy. They are, however, provided "as is" without warranty of correctness, timeliness, reliability, or completeness. Map elements do not represent a legal survey of land. Use of these data for any purpose should be with an acknowledgement of their limitations, including the fact that they are dynamic in nature and in a constant state of maintenance. Field investigation may be necessary.

1:1,200



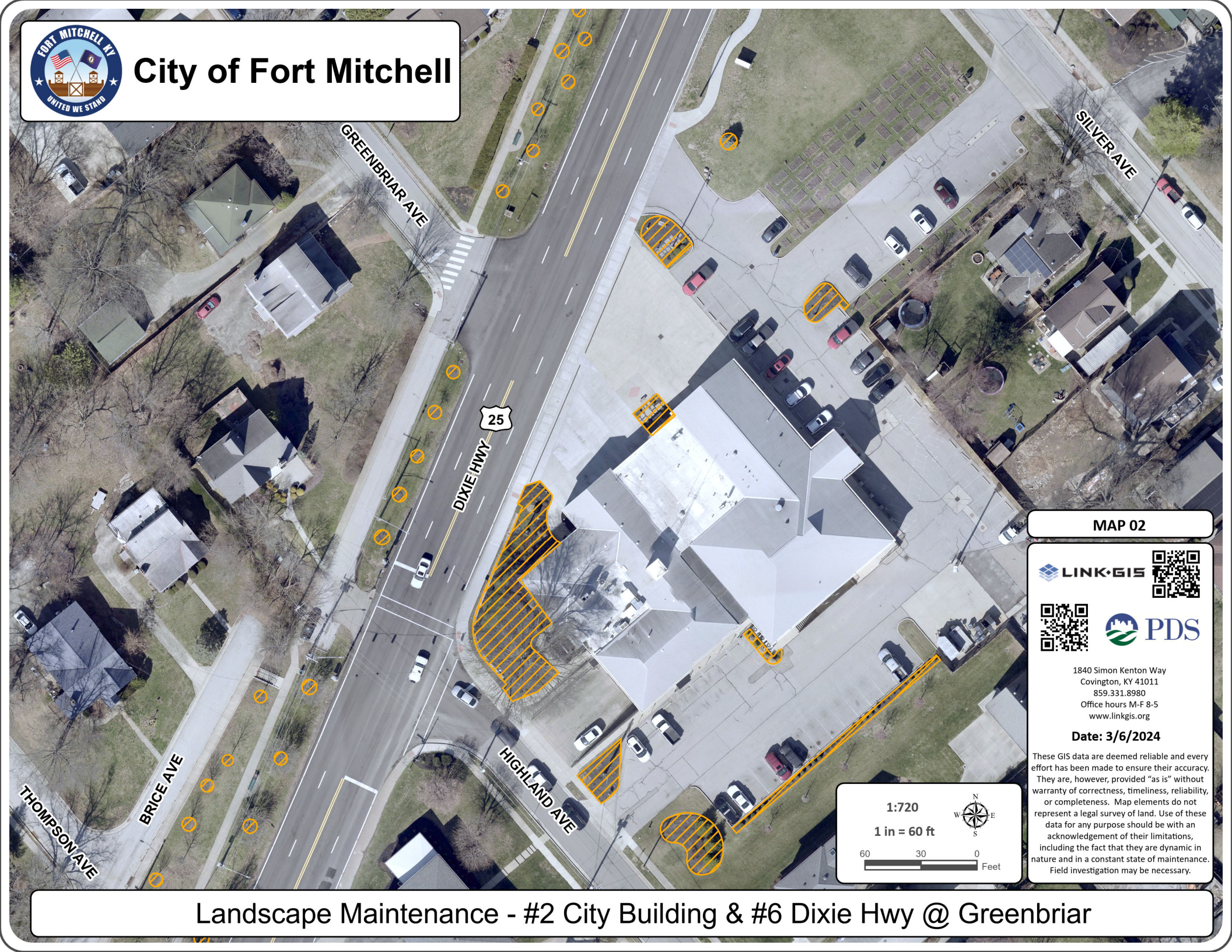
1 in = 100 ft



## Landscape Maintenance - #1 Iris Rd Park off Fort Mitchell Ave



# City of Fort Mitchell



MAP 02

LINK·GIS



PDS

1840 Simon Kenton Way  
Covington, KY 41011  
859.331.8980  
Office hours M-F 8-5  
[www.linkgis.org](http://www.linkgis.org)

Date: 3/6/2024

These GIS data are deemed reliable and every effort has been made to ensure their accuracy. They are, however, provided "as is" without warranty of correctness, timeliness, reliability, or completeness. Map elements do not represent a legal survey of land. Use of these data for any purpose should be with an acknowledgement of their limitations, including the fact that they are dynamic in nature and in a constant state of maintenance. Field investigation may be necessary.

1:720

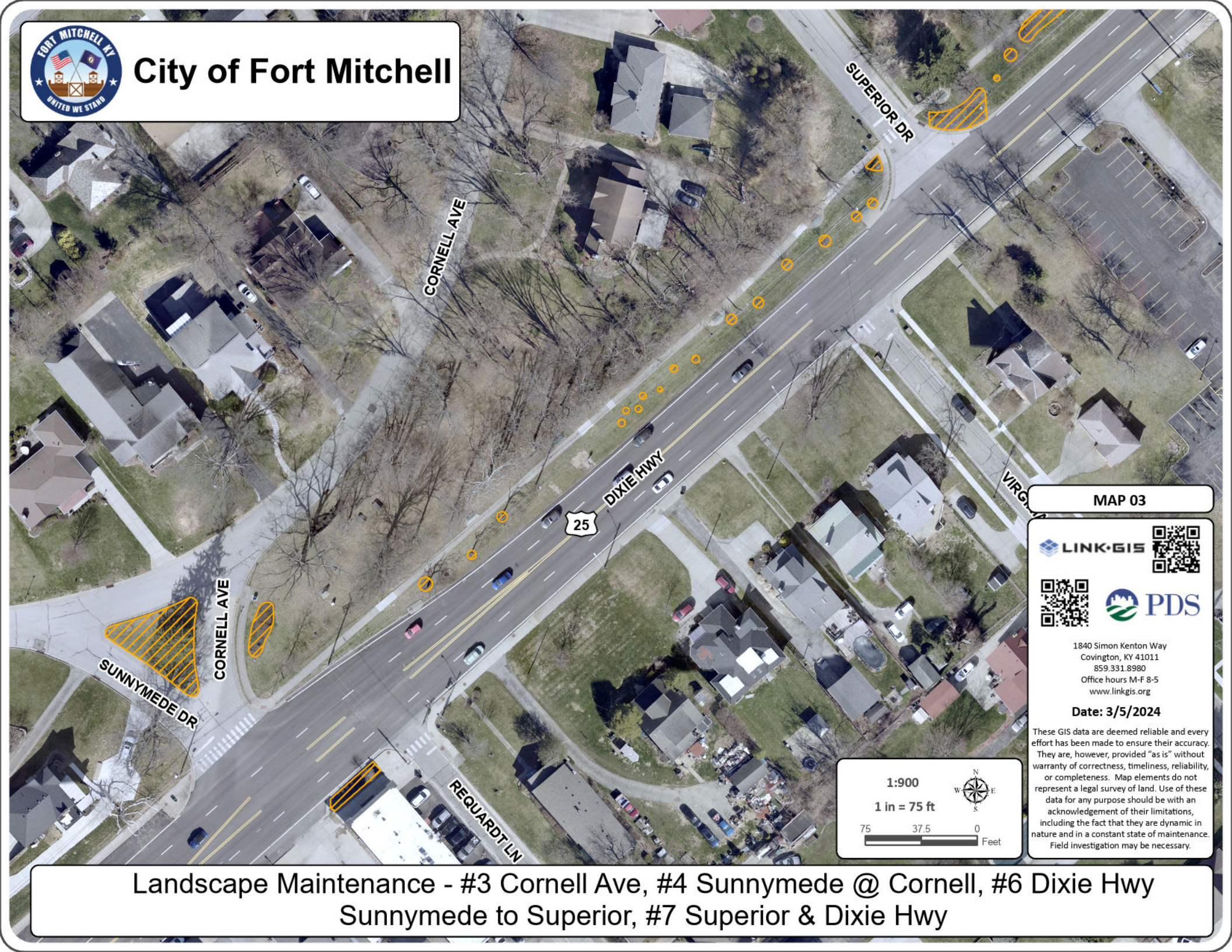
1 in = 60 ft



Landscape Maintenance - #2 City Building & #6 Dixie Hwy @ Greenbriar



# City of Fort Mitchell



MAP 03

LINK-GIS



1840 Simon Kenton Way  
Covington, KY 41011  
859.331.8980  
Office hours M-F 8-5  
www.linkgis.org

Date: 3/5/2024

These GIS data are deemed reliable and every effort has been made to ensure their accuracy. They are, however, provided "as is" without warranty of correctness, timeliness, reliability, or completeness. Map elements do not represent a legal survey of land. Use of these data for any purpose should be with an acknowledgement of their limitations, including the fact that they are dynamic in nature and in a constant state of maintenance. Field investigation may be necessary.

1:900

1 in = 75 ft



Landscape Maintenance - #3 Cornell Ave, #4 Sunnymede @ Cornell, #6 Dixie Hwy  
Sunnymede to Superior, #7 Superior & Dixie Hwy



# City of Fort Mitchell



MAP 04



1840 Simon Kenton Way  
Covington, KY 41011  
859.331.8980  
Office hours M-F 8-5  
[www.linkgis.org](http://www.linkgis.org)

**Date: 3/5/2024**

These GIS data are deemed reliable and every effort has been made to ensure their accuracy. They are, however, provided "as is" without warranty of correctness, timeliness, reliability, or completeness. Map elements do not represent a legal survey of land. Use of these data for any purpose should be with an acknowledgement of their limitations, including the fact that they are dynamic in nature and in a constant state of maintenance. Field investigation may be necessary.

1:900



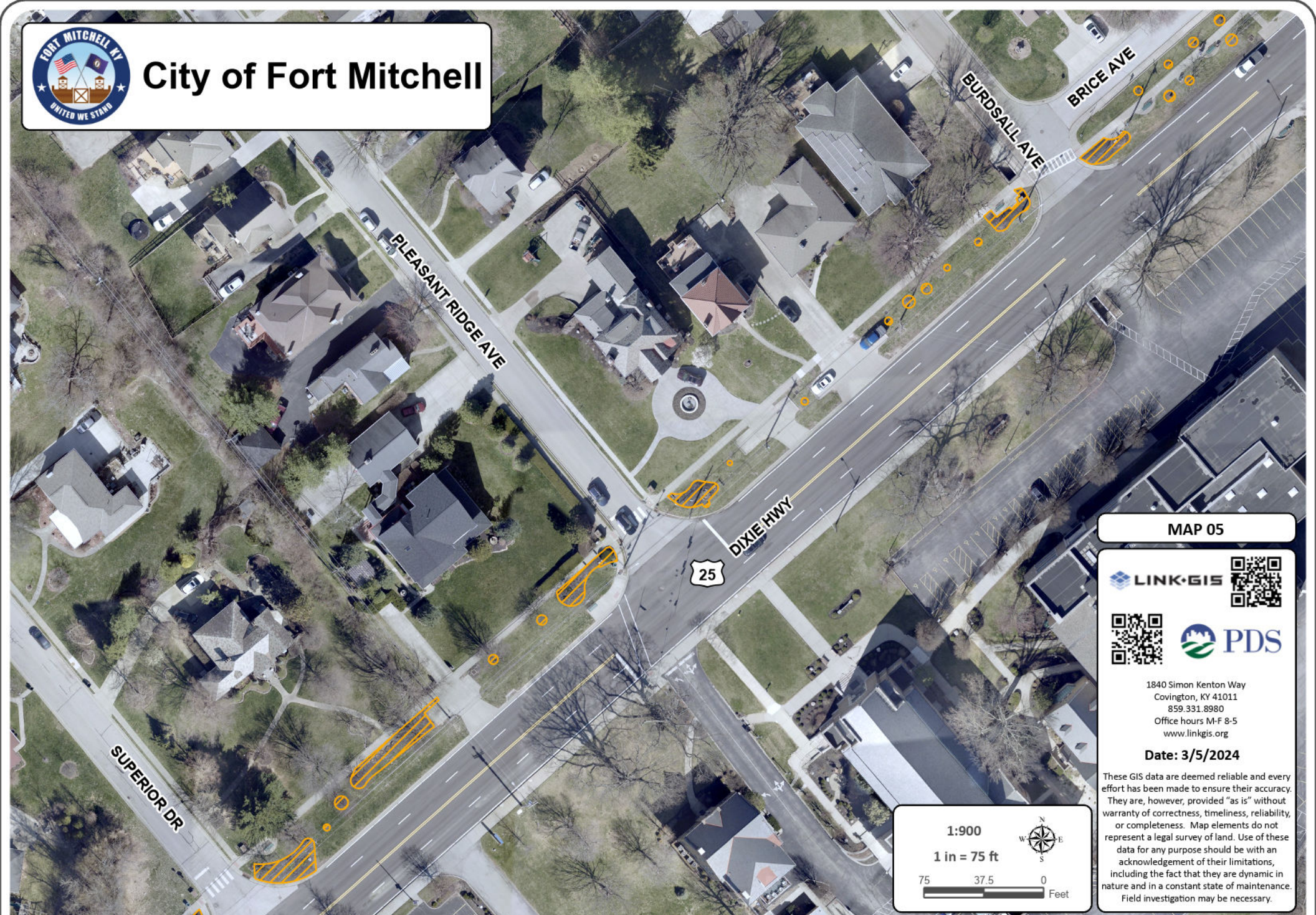
1 in = 75 ft



## Landscape Maintenance - #5 Sunnymede & Superior @ Princeton



# City of Fort Mitchell



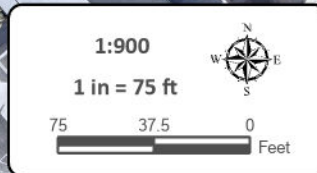
MAP 05



1840 Simon Kenton Way  
Covington, KY 41011  
859.331.8980  
Office hours M-F 8-5  
www.linkgis.org

Date: 3/5/2024

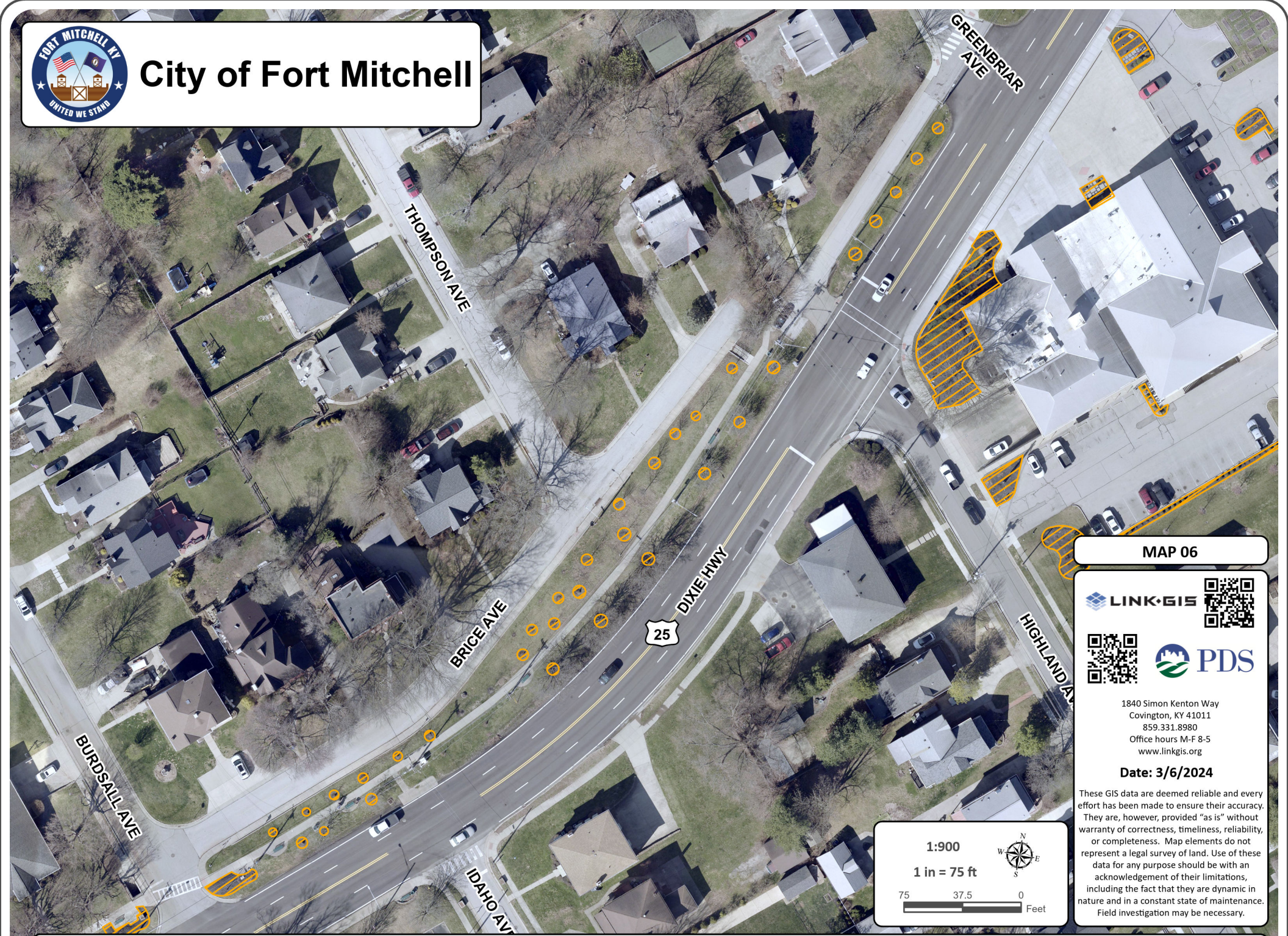
These GIS data are deemed reliable and every effort has been made to ensure their accuracy. They are, however, provided "as is" without warranty of correctness, timeliness, reliability, or completeness. Map elements do not represent a legal survey of land. Use of these data for any purpose should be with an acknowledgement of their limitations, including the fact that they are dynamic in nature and in a constant state of maintenance. Field investigation may be necessary.



## Landscape Maintenance - Pleasant Ridge Ave at Dixie Hwy & #6 Dixie Hwy Pleasant Ridge Ave to Burdsall Ave



# City of Fort Mitchell



MAP 06

LINK GIS



PDS

1840 Simon Kenton Way  
Covington, KY 41011  
859.331.8980  
Office hours M-F 8-5  
www.linkgis.org

Date: 3/6/2024

These GIS data are deemed reliable and every effort has been made to ensure their accuracy. They are, however, provided "as is" without warranty of correctness, timeliness, reliability, or completeness. Map elements do not represent a legal survey of land. Use of these data for any purpose should be with an acknowledgement of their limitations, including the fact that they are dynamic in nature and in a constant state of maintenance. Field investigation may be necessary.

1:900

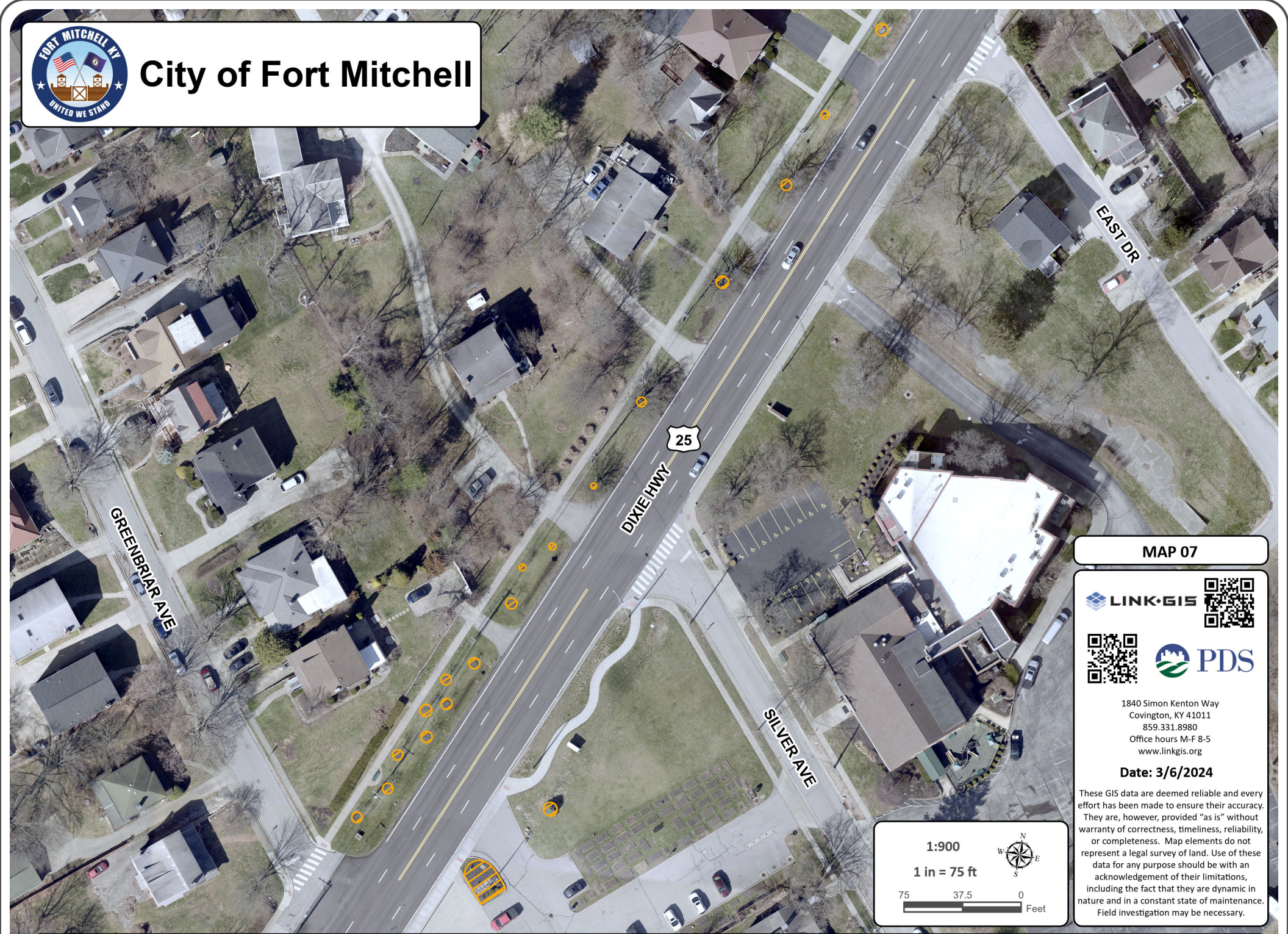
1 in = 75 ft



Landscape Maintenance - #9 Burdsall at Dixie Hwy & #6 Dixie Hwy Burdsall to Greenbriar



# City of Fort Mitchell



MAP 07

LINK GIS



1840 Simon Kenton Way  
Covington, KY 41011  
859.331.8980  
Office hours M-F 8-5  
www.linkgis.org

Date: 3/6/2024

This GIS data are deemed reliable and every effort has been made to ensure their accuracy. They are, however, provided "as is" without warranty of correctness, timeliness, reliability, or completeness. Map elements do not represent a legal survey of land. Use of these data for any purpose should be with an acknowledgement of their limitations, including the fact that they are dynamic in nature and in a constant state of maintenance. Field investigation may be necessary.

1:900



1 in = 75 ft



## Landscape Maintenance - #6 Dixie Hwy Greenbriar towards Woodlawn



# City of Fort Mitchell

JOHANNA LN

WOODLAWN AVE

LEATHERS RD

25

DIXIE HWY

EAST DR

MAP 08

LINK-GIS



PDS

1840 Simon Kenton Way  
Covington, KY 41011  
859.331.8980  
Office hours M-F 8-5  
www.linkgis.org

Date: 3/5/2024

These GIS data are deemed reliable and every effort has been made to ensure their accuracy. They are, however, provided "as is" without warranty of correctness, timeliness, reliability, or completeness. Map elements do not represent a legal survey of land. Use of these data for any purpose should be with an acknowledgement of their limitations, including the fact that they are dynamic in nature and in a constant state of maintenance. Field investigation may be necessary.

1:900

1 in = 75 ft



75 37.5 0 Feet

Landscape Maintenance - #6 Dixie Hwy Greenbriar towards Woodlawn





# City of Fort Mitchell



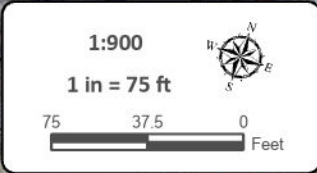
MAP 09



1840 Simon Kenton Way  
Covington, KY 41011  
859.331.8980  
Office hours M-F 8-5  
www.linkgis.org

Date: 3/5/2024

These GIS data are deemed reliable and every effort has been made to ensure their accuracy. They are, however, provided "as is" without warranty of correctness, timeliness, reliability, or completeness. Map elements do not represent a legal survey of land. Use of these data for any purpose should be with an acknowledgement of their limitations, including the fact that they are dynamic in nature and in a constant state of maintenance. Field investigation may be necessary.



## Landscape Maintenance - #6 Dixie Hwy Greenbriar Ave to Beechwood Rd



# City of Fort Mitchell



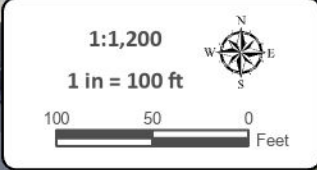
MAP 10



1840 Simon Kenton Way  
Covington, KY 41011  
859.331.8980  
Office hours M-F 8-5  
www.linkgis.org

Date: 3/5/2024

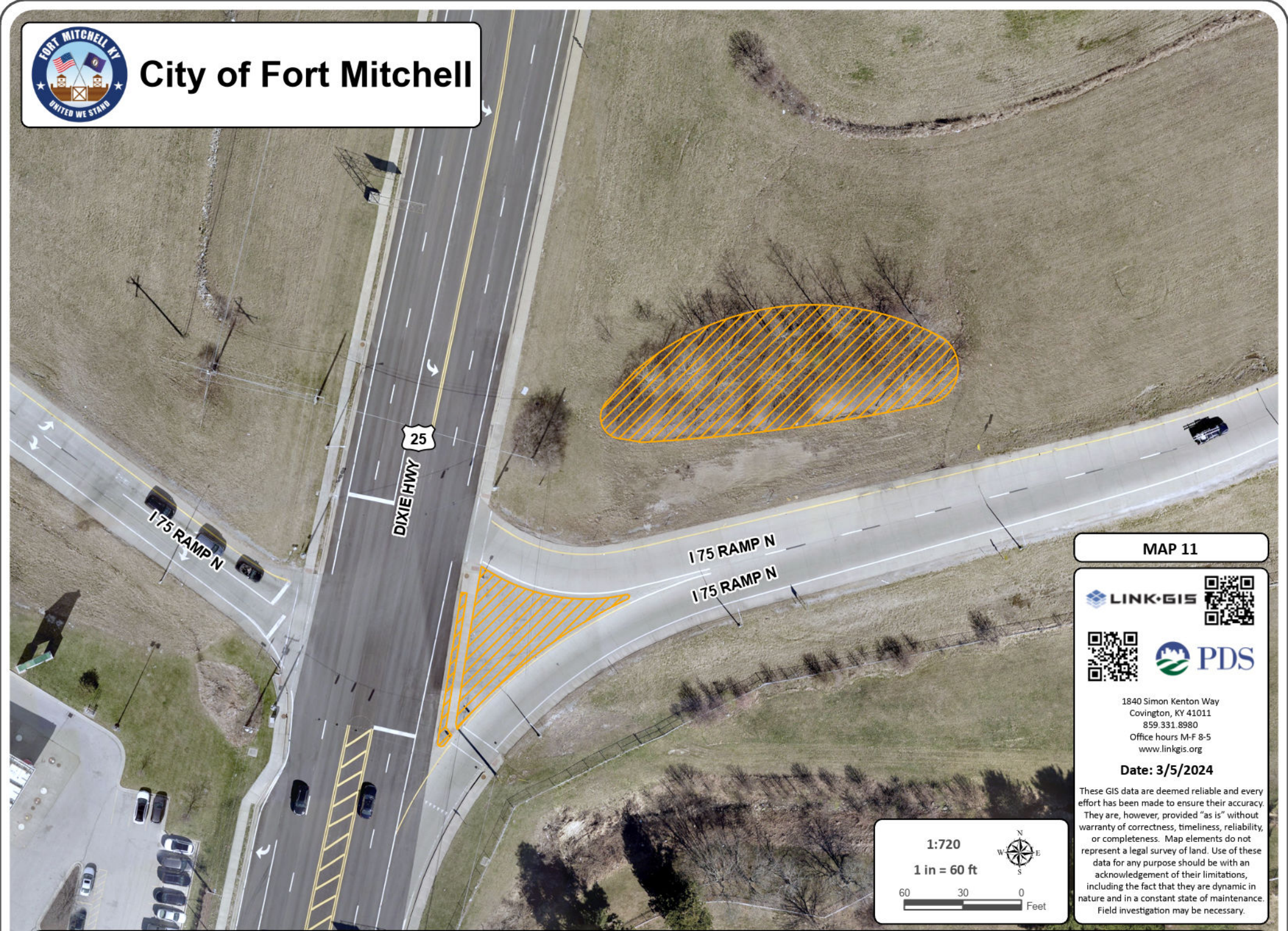
These GIS data are deemed reliable and every effort has been made to ensure their accuracy. They are, however, provided "as is" without warranty of correctness, timeliness, reliability, or completeness. Map elements do not represent a legal survey of land. Use of these data for any purpose should be with an acknowledgement of their limitations, including the fact that they are dynamic in nature and in a constant state of maintenance. Field investigation may be necessary.



Landscape Maintenance - #10 Sunnymede & Superior @ Harvard



# City of Fort Mitchell



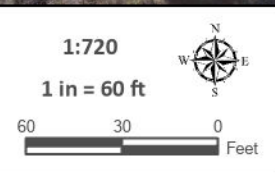
MAP 11



1840 Simon Kenton Way  
Covington, KY 41011  
859.331.8980  
Office hours M-F 8-5  
[www.linkgis.org](http://www.linkgis.org)

Date: 3/5/2024

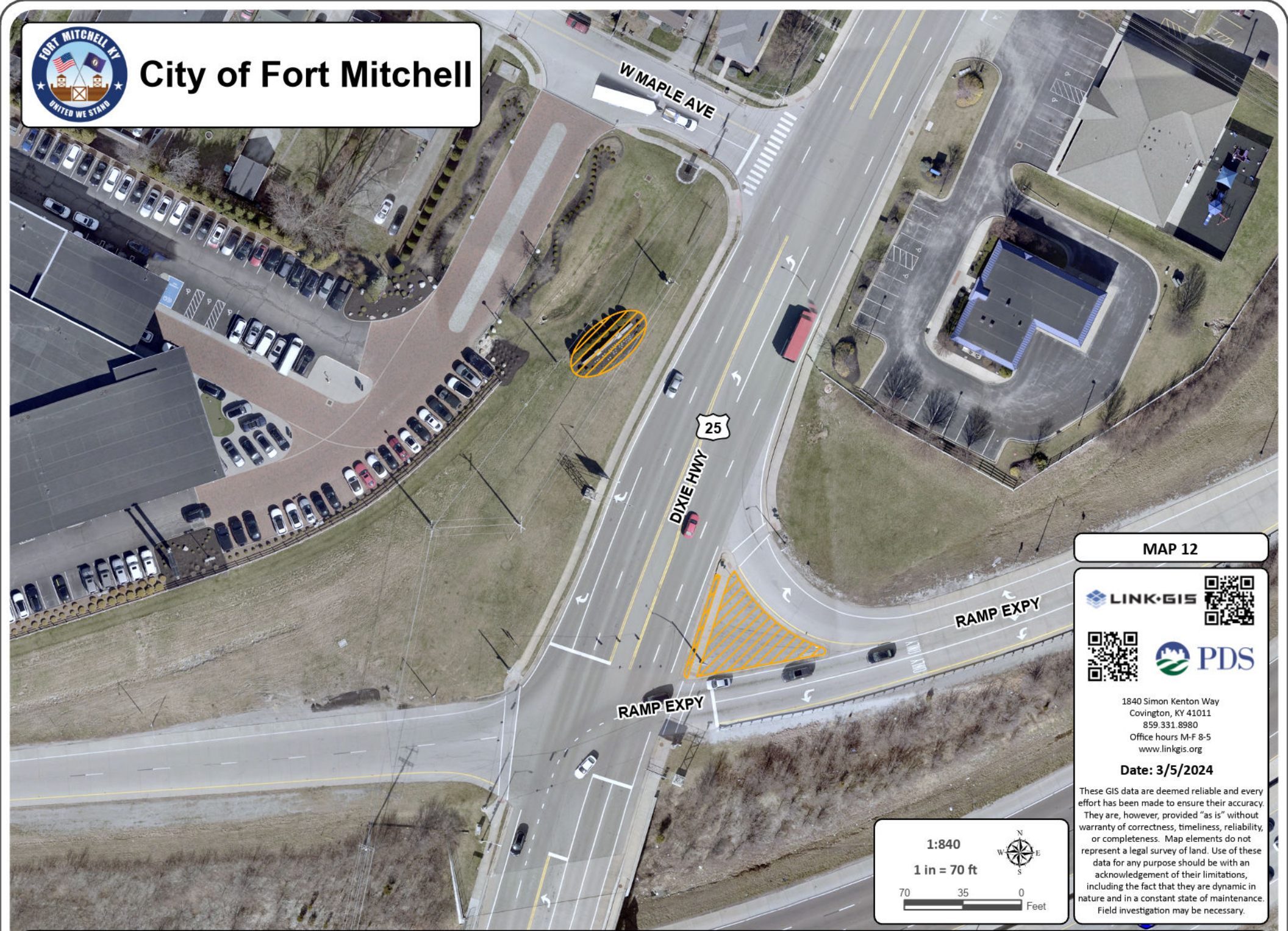
These GIS data are deemed reliable and every effort has been made to ensure their accuracy. They are, however, provided "as is" without warranty of correctness, timeliness, reliability, or completeness. Map elements do not represent a legal survey of land. Use of these data for any purpose should be with an acknowledgement of their limitations, including the fact that they are dynamic in nature and in a constant state of maintenance. Field investigation may be necessary.



## Landscape Maintenance - #11 Dixie Hwy at I75 NB Ramp



# City of Fort Mitchell



MAP 12

LINK·GIS 

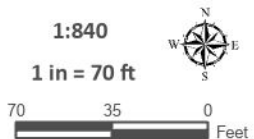
1840 Simon Kenton Way  
Covington, KY 41011  
859.331.8980  
Office hours M-F 8-5  
[www.linkgis.org](http://www.linkgis.org)

Date: 3/5/2024

These GIS data are deemed reliable and every effort has been made to ensure their accuracy. They are, however, provided "as is" without warranty of correctness, timeliness, reliability, or completeness. Map elements do not represent a legal survey of land. Use of these data for any purpose should be with an acknowledgement of their limitations, including the fact that they are dynamic in nature and in a constant state of maintenance. Field investigation may be necessary.

1:840

1 in = 70 ft

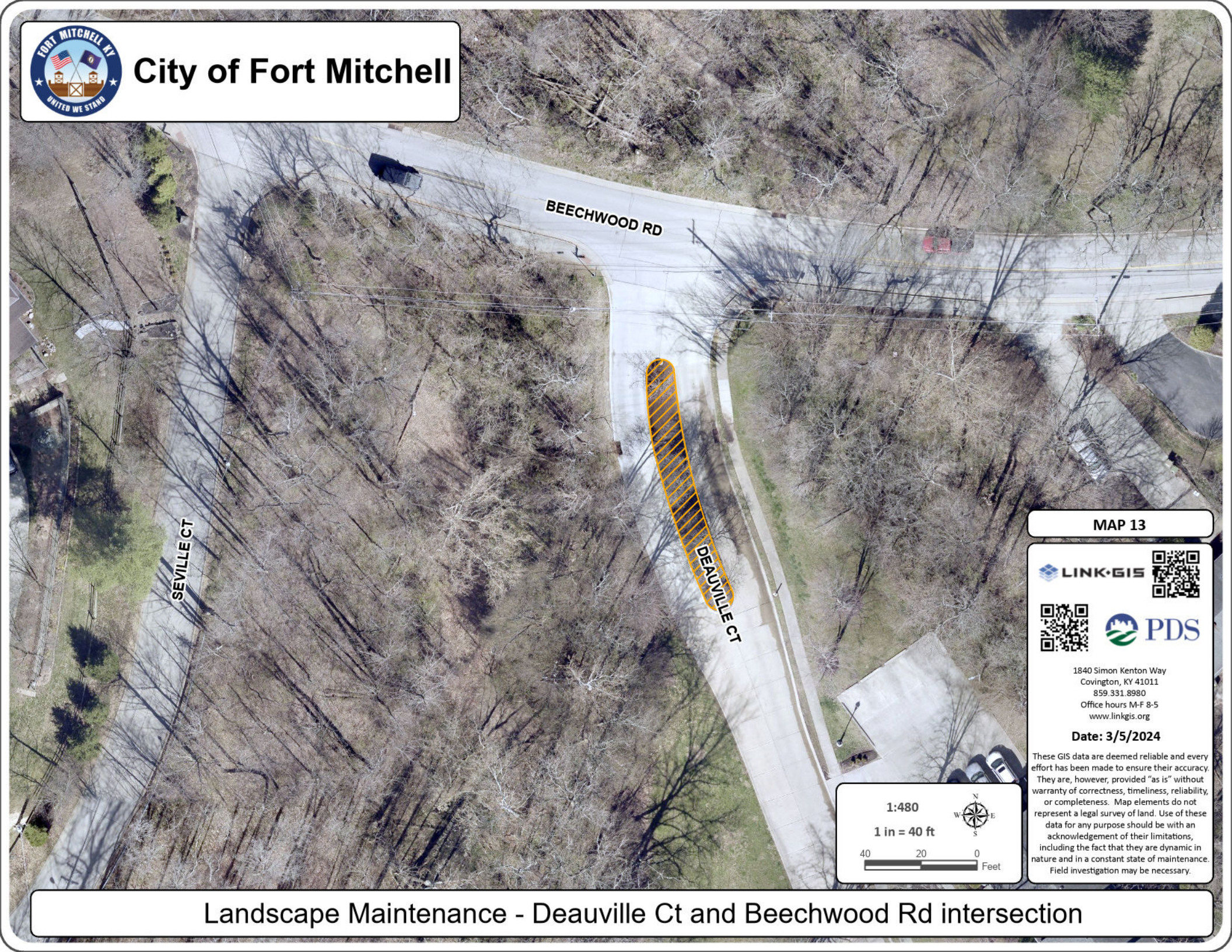


70 35 0 Feet

Landscape Maintenance - #12 Dixie Hwy at W Maple Ave Landscape bed around Monument Sign



# City of Fort Mitchell



BEECHWOOD RD

SEVILLE CT

DEAUVILLE CT

MAP 13



1840 Simon Kenton Way  
Covington, KY 41011  
859.331.8980  
Office hours M-F 8-5  
[www.linkgis.org](http://www.linkgis.org)

Date: 3/5/2024

These GIS data are deemed reliable and every effort has been made to ensure their accuracy. They are, however, provided "as is" without warranty of correctness, timeliness, reliability, or completeness. Map elements do not represent a legal survey of land. Use of these data for any purpose should be with an acknowledgement of their limitations, including the fact that they are dynamic in nature and in a constant state of maintenance. Field investigation may be necessary.

1:480

1 in = 40 ft



## Landscape Maintenance - Deauville Ct and Beechwood Rd intersection



# City of Fort Mitchell



FORTSIDE DR

DIXIE HWY

25

MAP 14



1840 Simon Kenton Way  
Covington, KY 41011  
859.331.8980  
Office hours M-F 8-5  
www.linkgis.org

Date: 3/5/2024

These GIS data are deemed reliable and every effort has been made to ensure their accuracy. They are, however, provided "as is" without warranty of correctness, timeliness, reliability, or completeness. Map elements do not represent a legal survey of land. Use of these data for any purpose should be with an acknowledgement of their limitations, including the fact that they are dynamic in nature and in a constant state of maintenance. Field investigation may be necessary.

1:300



1 in = 25 ft



## Landscape Maintenance - Fortside Dr & Dixie Hwy



# City of Fort Mitchell



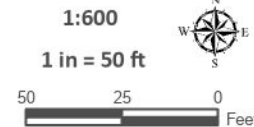
MAP 15



1840 Simon Kenton Way  
Covington, KY 41011  
859.331.8980  
Office hours M-F 8-5  
[www.linkgis.org](http://www.linkgis.org)

Date: 3/5/2024

These GIS data are deemed reliable and every effort has been made to ensure their accuracy. They are, however, provided "as is" without warranty of correctness, timeliness, reliability, or completeness. Map elements do not represent a legal survey of land. Use of these data for any purpose should be with an acknowledgement of their limitations, including the fact that they are dynamic in nature and in a constant state of maintenance. Field investigation may be necessary.



## Landscape Maintenance - Sunnymede / Cornell Sheet