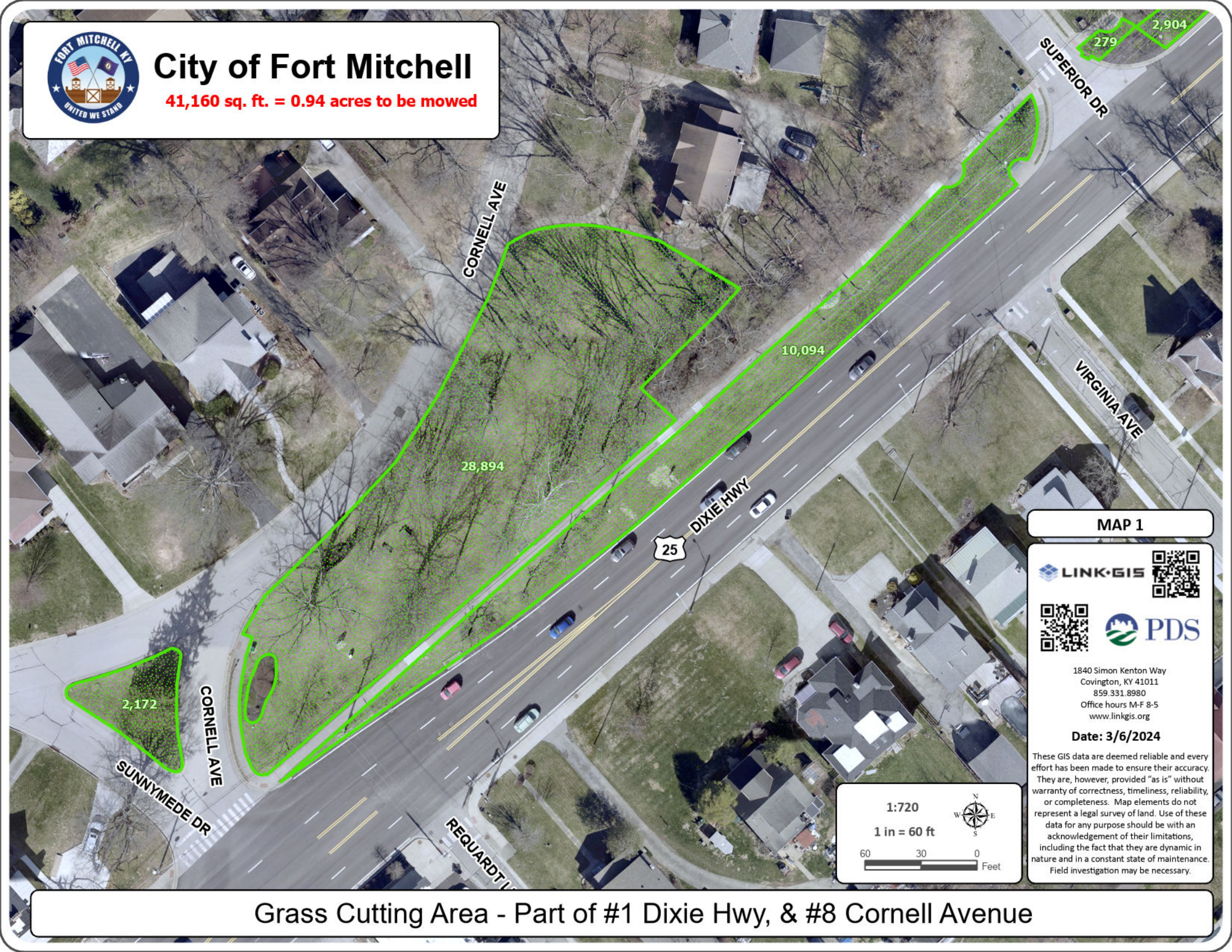




City of Fort Mitchell

41,160 sq. ft. = 0.94 acres to be mowed



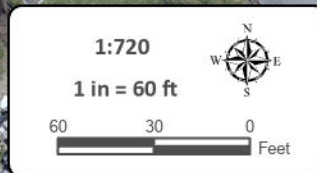
MAP 1



1840 Simon Kenton Way
Covington, KY 41011
859.331.8980
Office hours M-F 8-5
www.linkgis.org

Date: 3/6/2024

This GIS data are deemed reliable and every effort has been made to ensure their accuracy. They are, however, provided "as is" without warranty of correctness, timeliness, reliability, or completeness. Map elements do not represent a legal survey of land. Use of these data for any purpose should be with an acknowledgement of their limitations, including the fact that they are dynamic in nature and in a constant state of maintenance. Field investigation may be necessary.

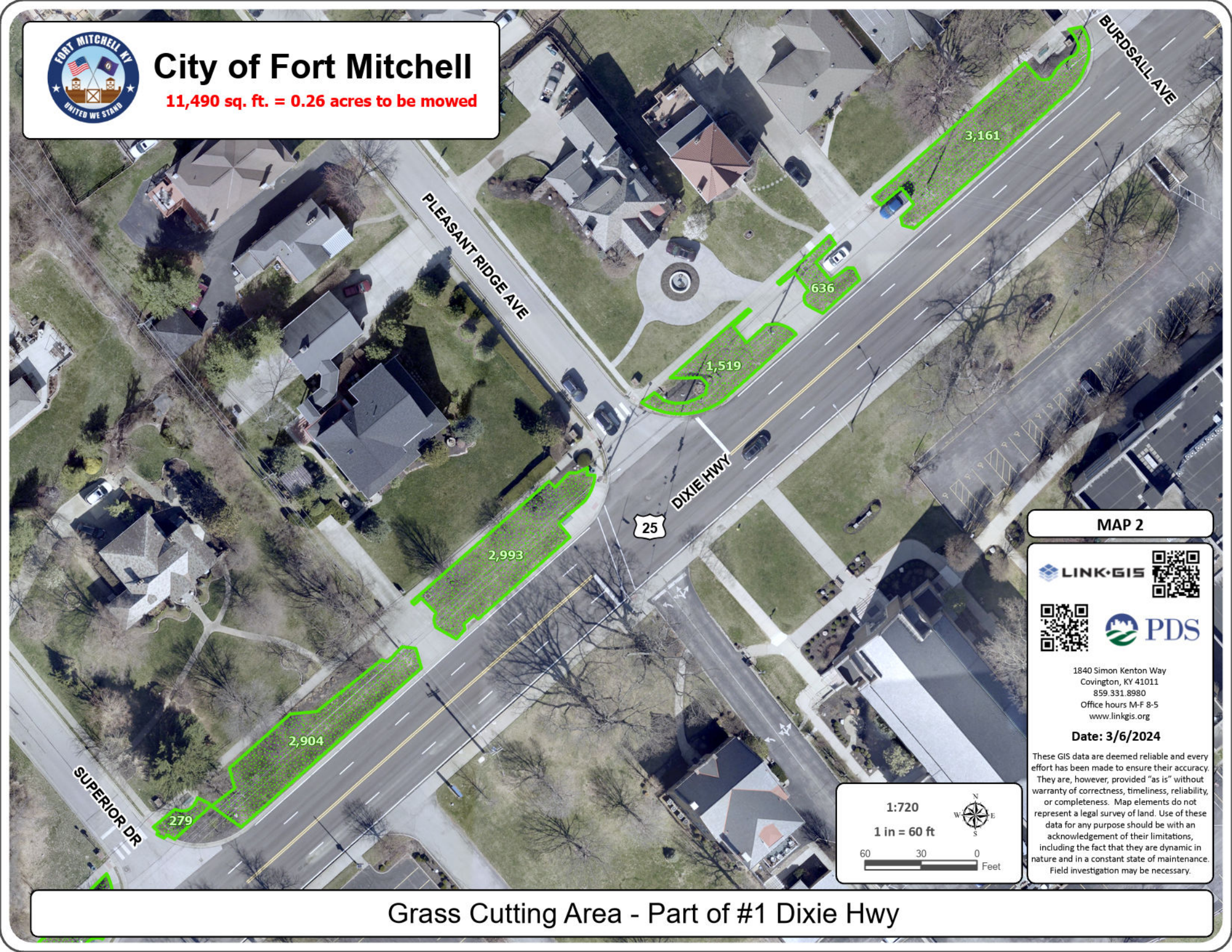


Grass Cutting Area - Part of #1 Dixie Hwy, & #8 Cornell Avenue



City of Fort Mitchell

11,490 sq. ft. = 0.26 acres to be mowed



MAP 2



1840 Simon Kenton Way
Covington, KY 41011
859.331.8980
Office hours M-F 8-5
www.linkgis.org

Date: 3/6/2024

These GIS data are deemed reliable and every effort has been made to ensure their accuracy. They are, however, provided "as is" without warranty of correctness, timeliness, reliability, or completeness. Map elements do not represent a legal survey of land. Use of these data for any purpose should be with an acknowledgement of their limitations, including the fact that they are dynamic in nature and in a constant state of maintenance. Field investigation may be necessary.

1:720

1 in = 60 ft

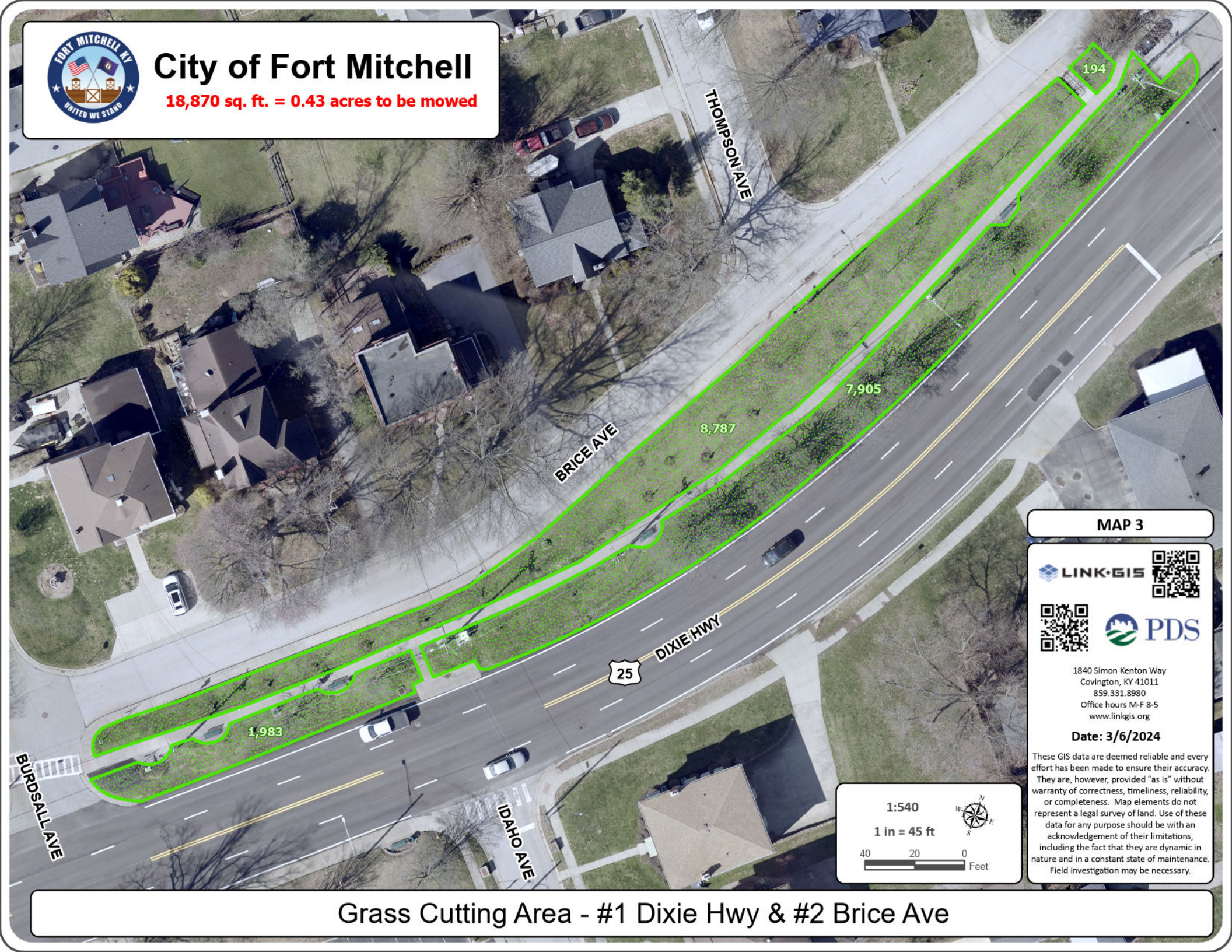


Grass Cutting Area - Part of #1 Dixie Hwy



City of Fort Mitchell

18,870 sq. ft. = 0.43 acres to be mowed



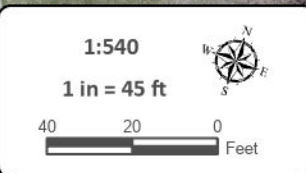
MAP 3



1840 Simon Kenton Way
Covington, KY 41011
859.331.8980
Office hours M-F 8-5
www.linkgis.org

Date: 3/6/2024

These GIS data are deemed reliable and every effort has been made to ensure their accuracy. They are, however, provided "as is" without warranty of correctness, timeliness, reliability, or completeness. Map elements do not represent a legal survey of land. Use of these data for any purpose should be with an acknowledgement of their limitations, including the fact that they are dynamic in nature and in a constant state of maintenance. Field investigation may be necessary.



Grass Cutting Area - #1 Dixie Hwy & #2 Brice Ave



City of Fort Mitchell

25,272 sq. ft. = 0.58 acres to be mowed

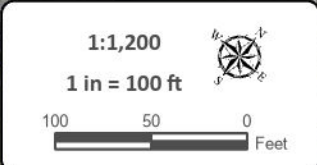


MAP 4

1840 Simon Kenton Way
 Covington, KY 41011
 859.331.8980
 Office hours M-F 8-5
 www.linkgis.org

Date: 3/6/2024

These GIS data are deemed reliable and every effort has been made to ensure their accuracy. They are, however, provided "as is" without warranty of correctness, timeliness, reliability, or completeness. Map elements do not represent a legal survey of land. Use of these data for any purpose should be with an acknowledgment of their limitations, including the fact that they are dynamic in nature and in a constant state of maintenance. Field investigation may be necessary.

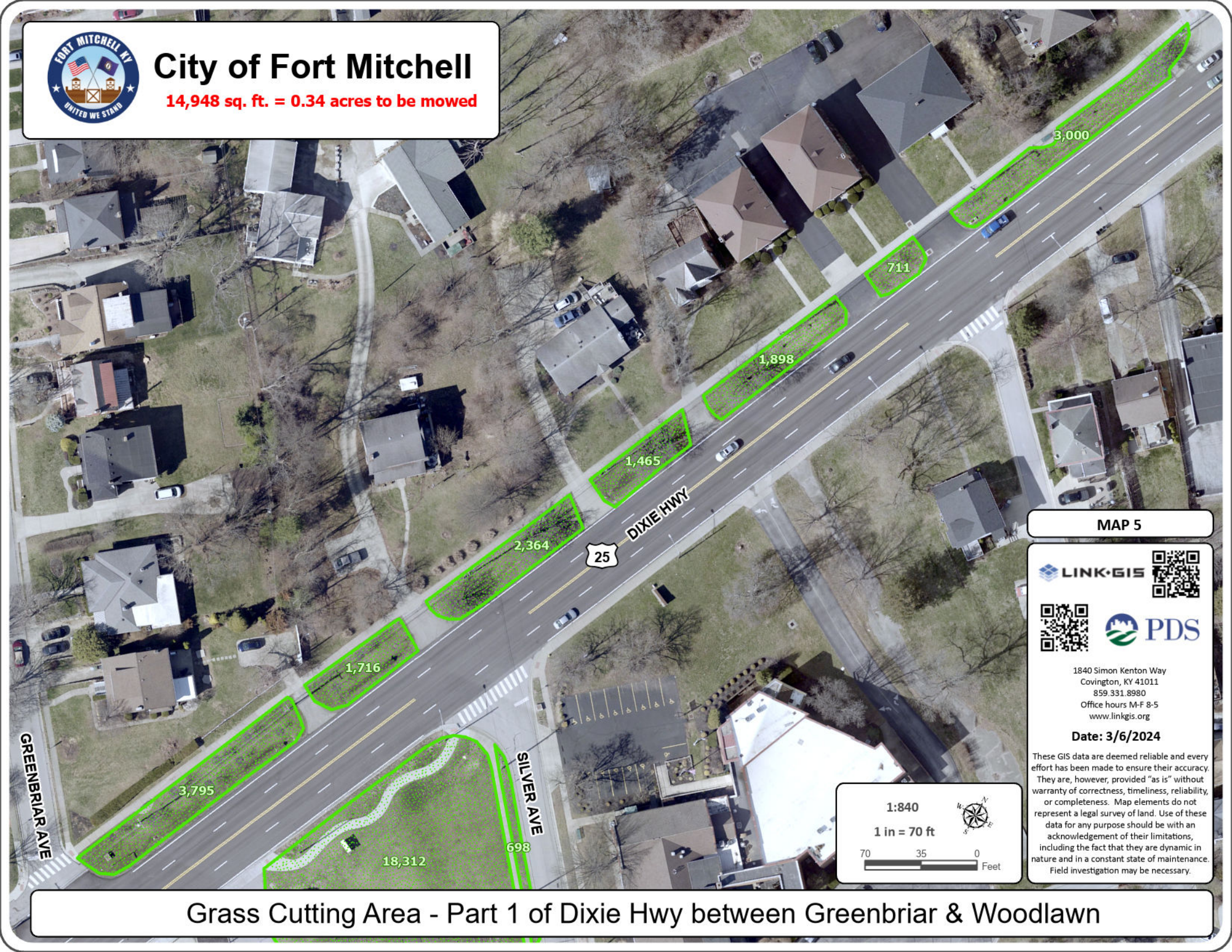


Grass Cutting Area - #1 Dixie Hwy @ Greenbriar, #2 Brice Ave & #10 City Building Lot @ Highland & Dixie Hwy.



City of Fort Mitchell

14,948 sq. ft. = 0.34 acres to be mowed



MAP 5



1840 Simon Kenton Way
Covington, KY 41011
859.331.8980
Office hours M-F 8-5
www.linkgis.org

Date: 3/6/2024

These GIS data are deemed reliable and every effort has been made to ensure their accuracy. They are, however, provided "as is" without warranty of correctness, timeliness, reliability, or completeness. Map elements do not represent a legal survey of land. Use of these data for any purpose should be with an acknowledgement of their limitations, including the fact that they are dynamic in nature and in a constant state of maintenance. Field investigation may be necessary.

1:840

1 in = 70 ft

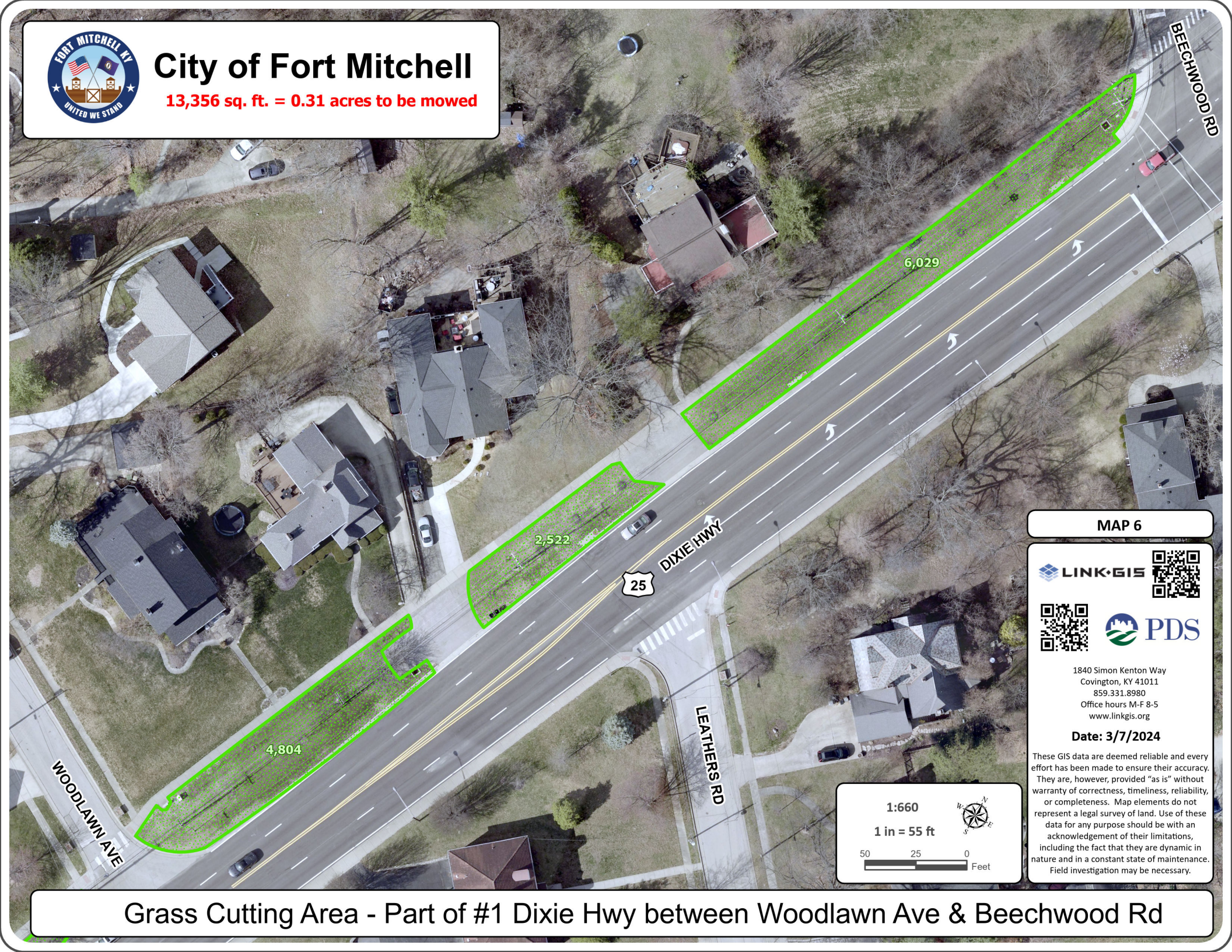


Grass Cutting Area - Part 1 of Dixie Hwy between Greenbriar & Woodlawn



City of Fort Mitchell

13,356 sq. ft. = 0.31 acres to be mowed



MAP 6



1840 Simon Kenton Way
Covington, KY 41011
859.331.8980
Office hours M-F 8-5
www.linkgis.org

Date: 3/7/2024

These GIS data are deemed reliable and every effort has been made to ensure their accuracy. They are, however, provided "as is" without warranty of correctness, timeliness, reliability, or completeness. Map elements do not represent a legal survey of land. Use of these data for any purpose should be with an acknowledgement of their limitations, including the fact that they are dynamic in nature and in a constant state of maintenance. Field investigation may be necessary.

1:660

1 in = 55 ft

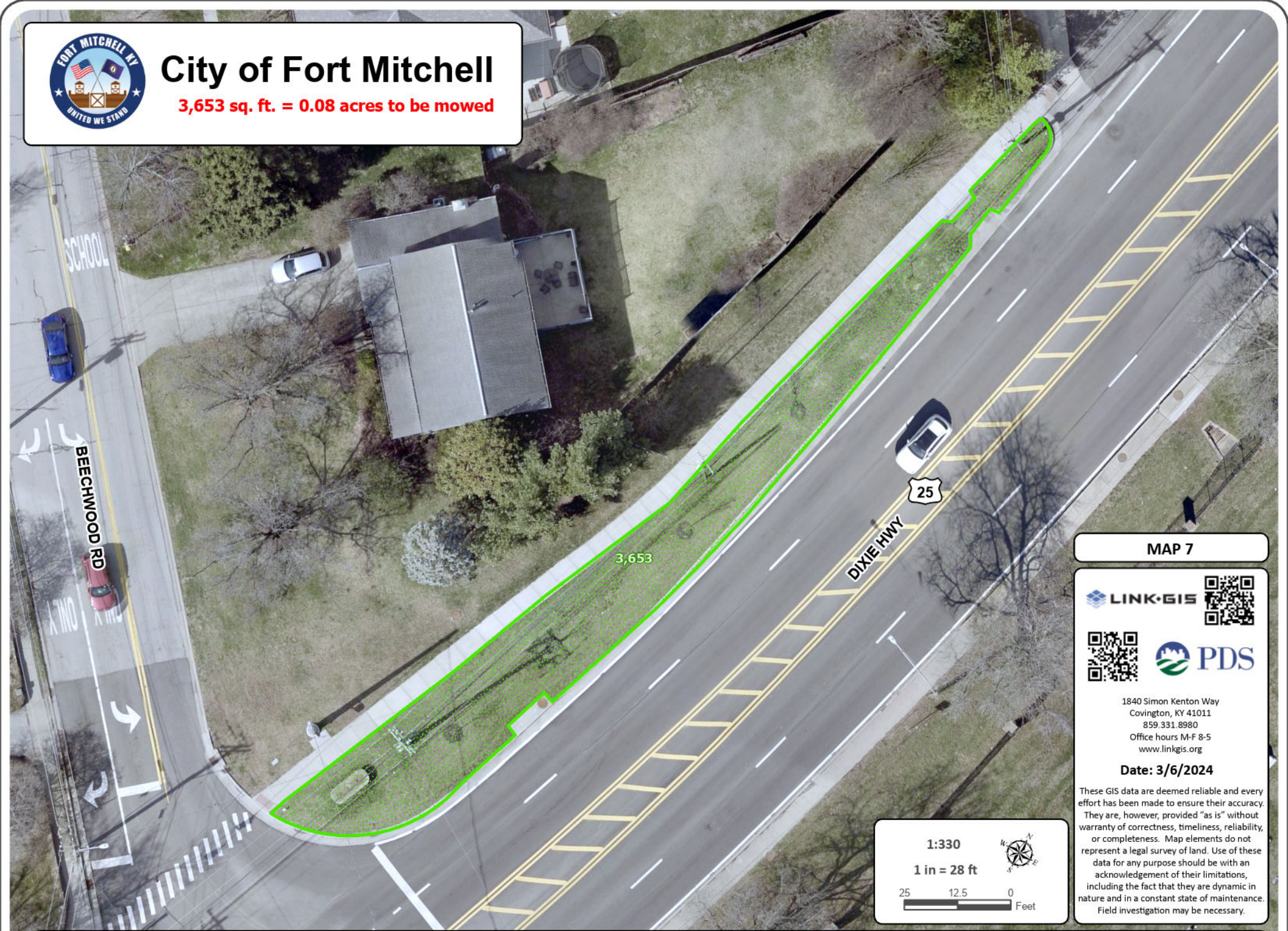


Grass Cutting Area - Part of #1 Dixie Hwy between Woodlawn Ave & Beechwood Rd



City of Fort Mitchell

3,653 sq. ft. = 0.08 acres to be mowed



MAP 7



1840 Simon Kenton Way
Covington, KY 41011
859.331.8980
Office hours M-F 8-5
www.linkgis.org

Date: 3/6/2024

These GIS data are deemed reliable and every effort has been made to ensure their accuracy. They are, however, provided "as is" without warranty of correctness, timeliness, reliability, or completeness. Map elements do not represent a legal survey of land. Use of these data for any purpose should be with an acknowledgement of their limitations, including the fact that they are dynamic in nature and in a constant state of maintenance. Field investigation may be necessary.

1:330

1 in = 28 ft

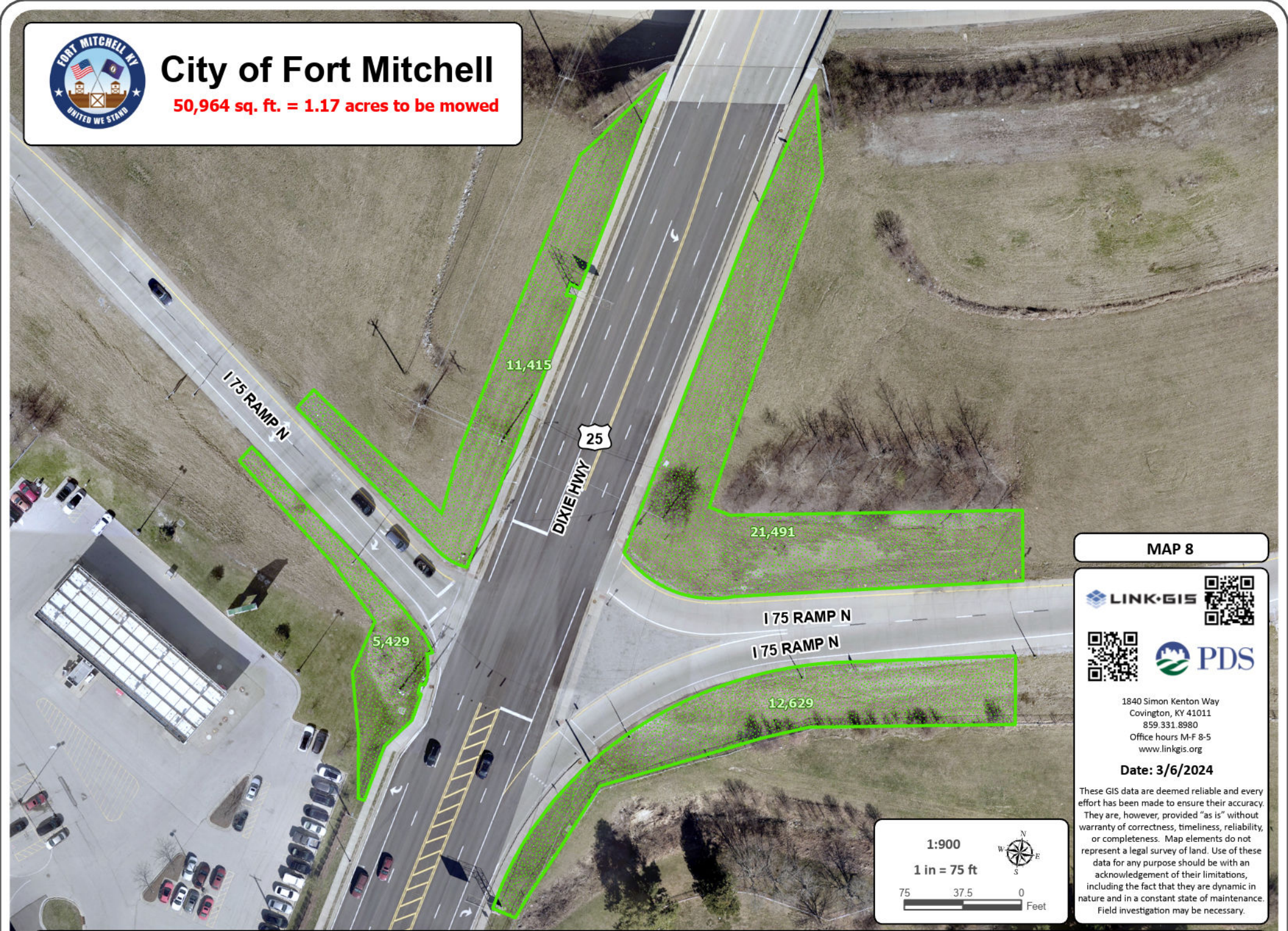


Grass Cutting Area - Part of # 1 Dixie Hwy between Beechwood Rd and Shopping Center



City of Fort Mitchell

50,964 sq. ft. = 1.17 acres to be mowed



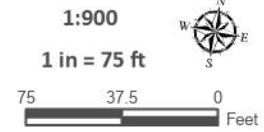
MAP 8



1840 Simon Kenton Way
Covington, KY 41011
859.331.8980
Office hours M-F 8-5
www.linkgis.org

Date: 3/6/2024

These GIS data are deemed reliable and every effort has been made to ensure their accuracy. They are, however, provided "as is" without warranty of correctness, timeliness, reliability, or completeness. Map elements do not represent a legal survey of land. Use of these data for any purpose should be with an acknowledgement of their limitations, including the fact that they are dynamic in nature and in a constant state of maintenance. Field investigation may be necessary.

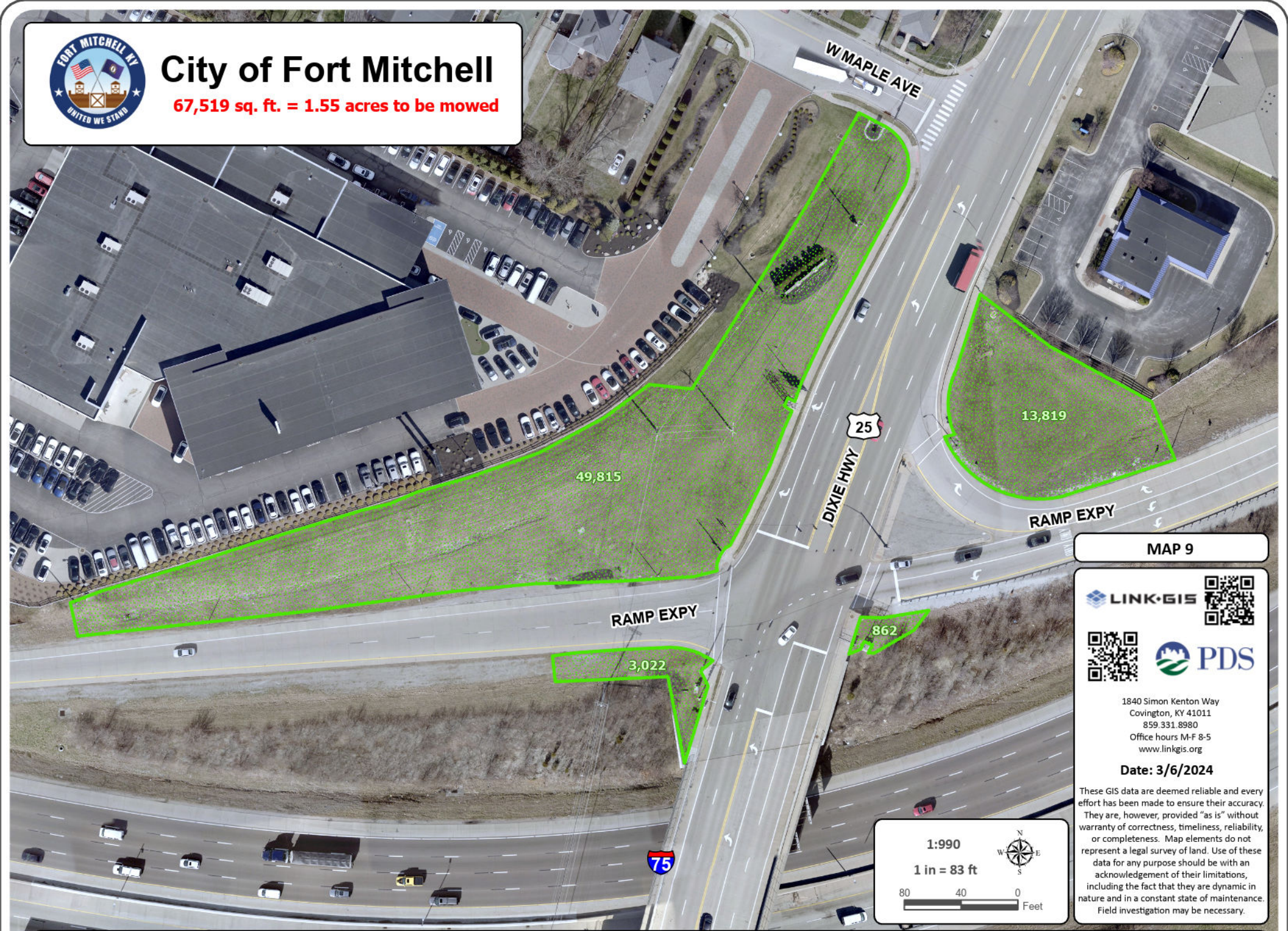


Grass Cutting Area - #1 Dixie Hwy @ I75 Overpass



City of Fort Mitchell

67,519 sq. ft. = 1.55 acres to be mowed



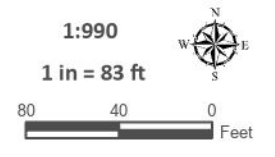
MAP 9



1840 Simon Kenton Way
Covington, KY 41011
859.331.8980
Office hours M-F 8-5
www.linkgis.org

Date: 3/6/2024

These GIS data are deemed reliable and every effort has been made to ensure their accuracy. They are, however, provided "as is" without warranty of correctness, timeliness, reliability, or completeness. Map elements do not represent a legal survey of land. Use of these data for any purpose should be with an acknowledgement of their limitations, including the fact that they are dynamic in nature and in a constant state of maintenance. Field investigation may be necessary.



Grass Cutting Area - #1 Dixie Hwy, I75 Overpass to West Maple Ave



City of Fort Mitchell

3,593 sq. ft. = 0.08 acres to be mowed

KRUE

ST JOHNS RD

3,593



DIXIE HWY

MAP 10



1840 Simon Kenton Way
Covington, KY 41011
859.331.8980
Office hours M-F 8-5
www.linkgis.org

Date: 3/6/2024

These GIS data are deemed reliable and every effort has been made to ensure their accuracy. They are, however, provided "as is" without warranty of correctness, timeliness, reliability, or completeness. Map elements do not represent a legal survey of land. Use of these data for any purpose should be with an acknowledgement of their limitations, including the fact that they are dynamic in nature and in a constant state of maintenance. Field investigation may be necessary.

1:720

1 in = 60 ft



Grass Cutting Area - #1 Dixie Highway



City of Fort Mitchell

3,801 sq. ft. = 0.09 acres to be mowed



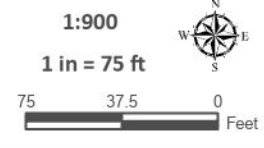
MAP 11



1840 Simon Kenton Way
Covington, KY 41011
859.331.8980
Office hours M-F 8-5
www.linkgis.org

Date: 3/6/2024

These GIS data are deemed reliable and every effort has been made to ensure their accuracy. They are, however, provided "as is" without warranty of correctness, timeliness, reliability, or completeness. Map elements do not represent a legal survey of land. Use of these data for any purpose should be with an acknowledgement of their limitations, including the fact that they are dynamic in nature and in a constant state of maintenance. Field investigation may be necessary.

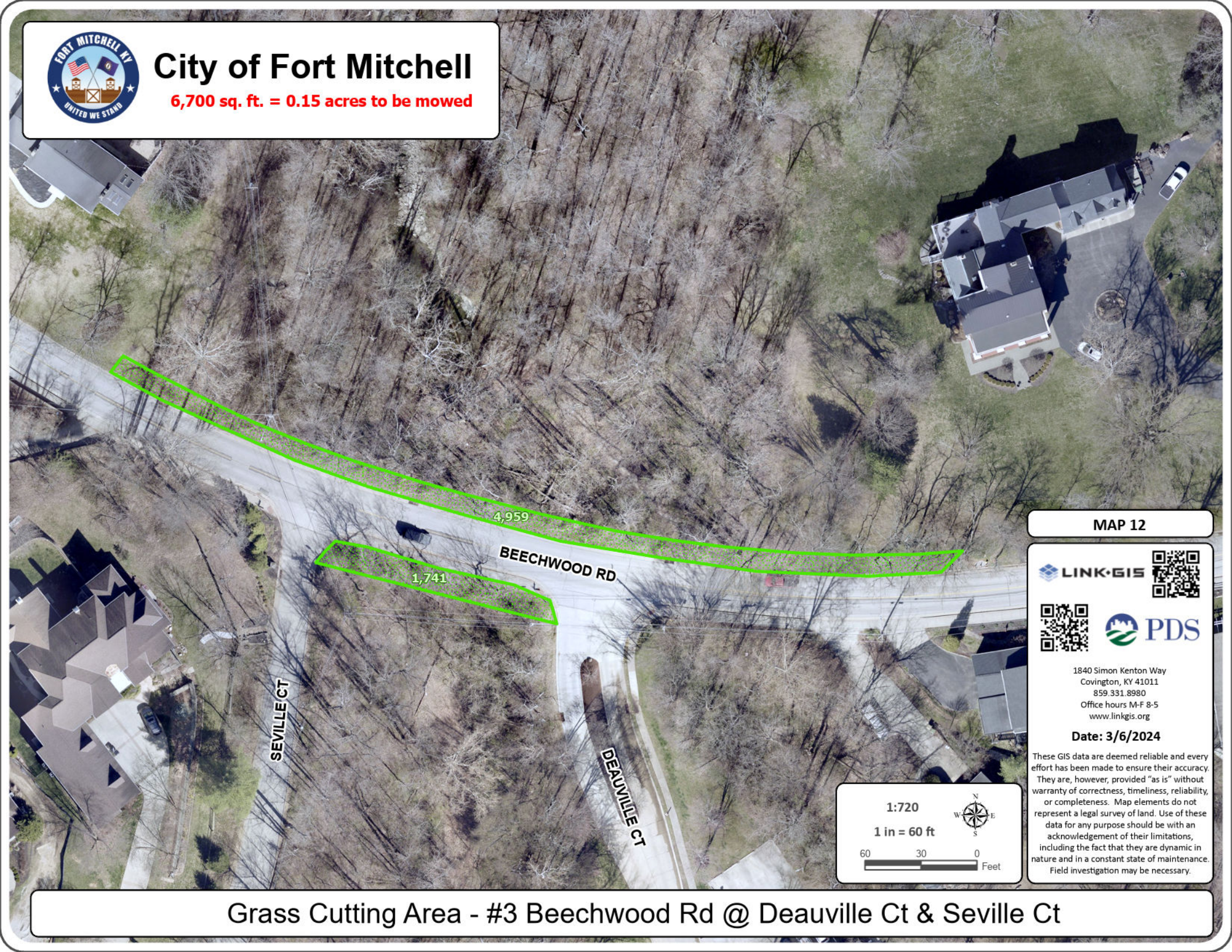


Grass Cutting Area - #1 Dixie Hwy- Fortside Dr to City Limit



City of Fort Mitchell

6,700 sq. ft. = 0.15 acres to be mowed



MAP 12



1840 Simon Kenton Way
Covington, KY 41011
859.331.8980
Office hours M-F 8-5
www.linkgis.org

Date: 3/6/2024

These GIS data are deemed reliable and every effort has been made to ensure their accuracy. They are, however, provided "as is" without warranty of correctness, timeliness, reliability, or completeness. Map elements do not represent a legal survey of land. Use of these data for any purpose should be with an acknowledgement of their limitations, including the fact that they are dynamic in nature and in a constant state of maintenance. Field investigation may be necessary.

1:720

1 in = 60 ft

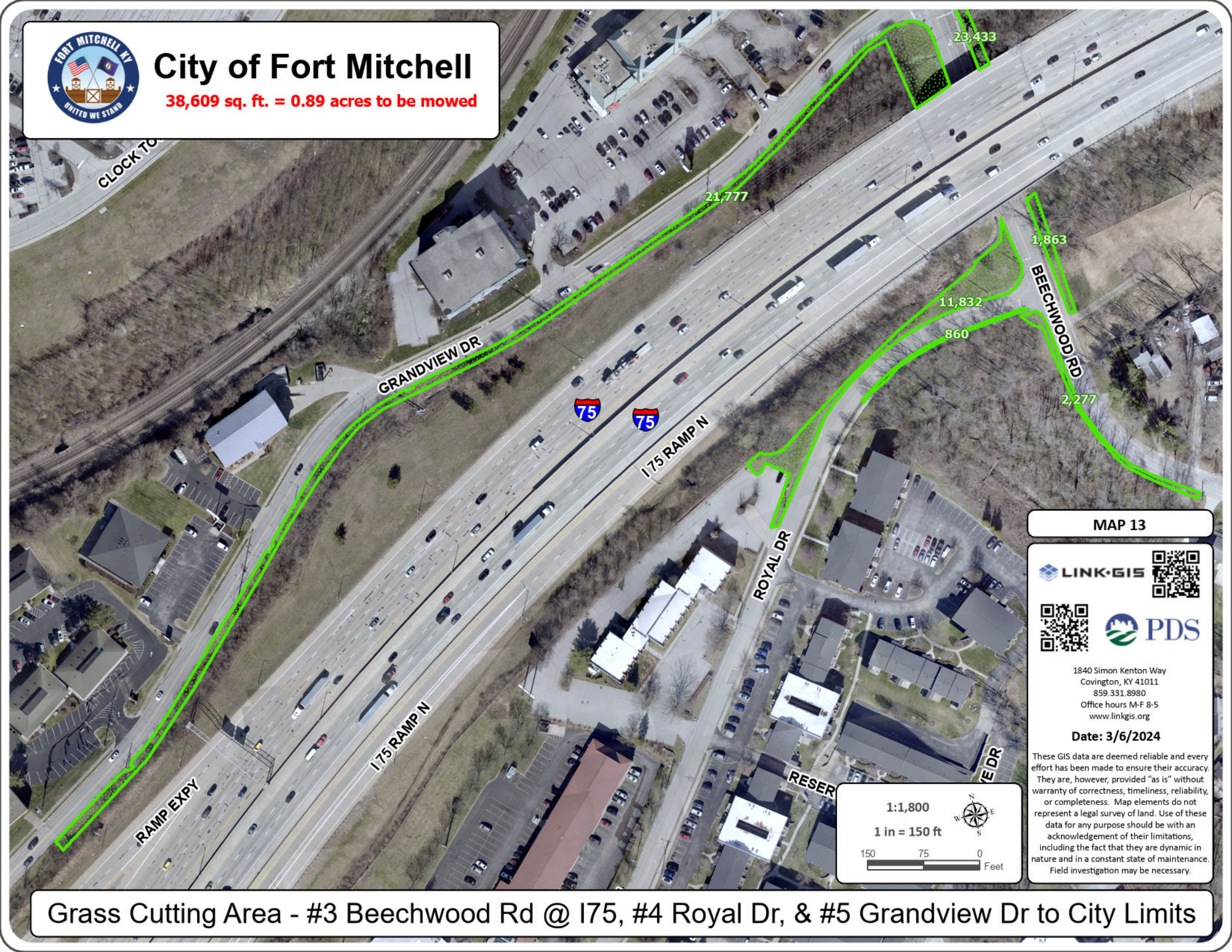


Grass Cutting Area - #3 Beechwood Rd @ Deauville Ct & Seville Ct



City of Fort Mitchell

38,609 sq. ft. = 0.89 acres to be mowed



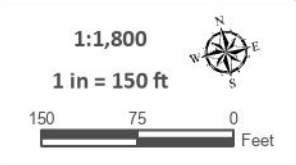
MAP 13



1840 Simon Kenton Way
Covington, KY 41011
859.331.8980
Office hours M-F 8-5
www.linkgis.org

Date: 3/6/2024

These GIS data are deemed reliable and every effort has been made to ensure their accuracy. They are, however, provided "as is" without warranty of correctness, timeliness, reliability, or completeness. Map elements do not represent a legal survey of land. Use of these data for any purpose should be with an acknowledgement of their limitations, including the fact that they are dynamic in nature and in a constant state of maintenance. Field investigation may be necessary.



Grass Cutting Area - #3 Beechwood Rd @ I75, #4 Royal Dr, & #5 Grandview Dr to City Limits



City of Fort Mitchell

14,980 sq. ft. = 0.34 acres to be mowed



MAP 14



1840 Simon Kenton Way
Covington, KY 41011
859.331.8980
Office hours M-F 8-5
www.linkgis.org

Date: 3/6/2024

These GIS data are deemed reliable and every effort has been made to ensure their accuracy. They are, however, provided "as is" without warranty of correctness, timeliness, reliability, or completeness. Map elements do not represent a legal survey of land. Use of these data for any purpose should be with an acknowledgement of their limitations, including the fact that they are dynamic in nature and in a constant state of maintenance. Field investigation may be necessary.

1:900

1 in = 75 ft

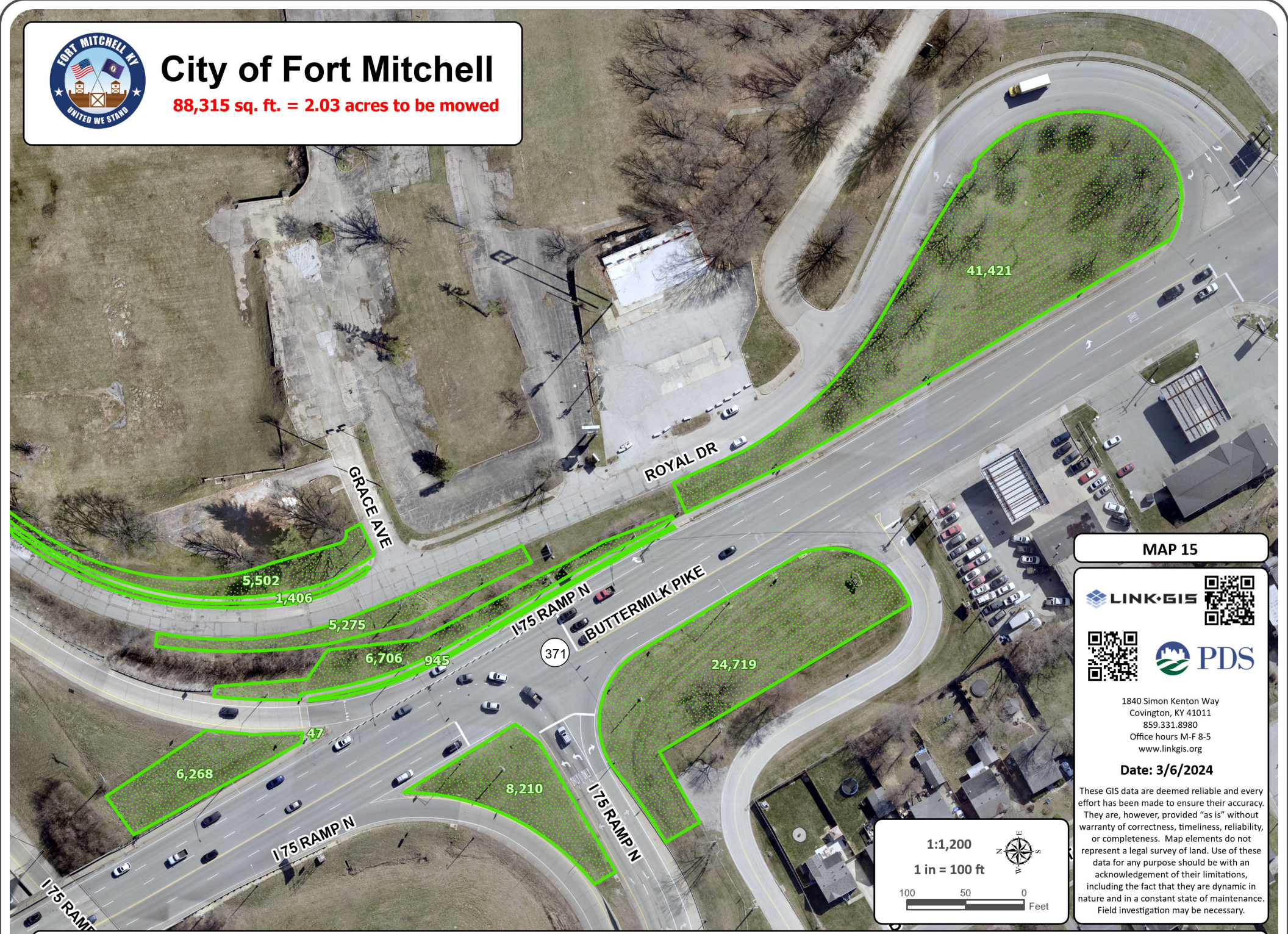


Grass Cutting Area - #3 Beechwood Rd From Mercury to Dominion



City of Fort Mitchell

88,315 sq. ft. = 2.03 acres to be mowed



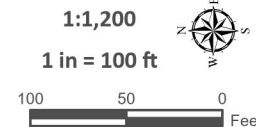
MAP 15



1840 Simon Kenton Way
Covington, KY 41011
859.331.8980
Office hours M-F 8-5
www.linkgis.org

Date: 3/6/2024

This GIS data are deemed reliable and every effort has been made to ensure their accuracy. They are, however, provided "as is" without warranty of correctness, timeliness, reliability, or completeness. Map elements do not represent a legal survey of land. Use of these data for any purpose should be with an acknowledgement of their limitations, including the fact that they are dynamic in nature and in a constant state of maintenance. Field investigation may be necessary.

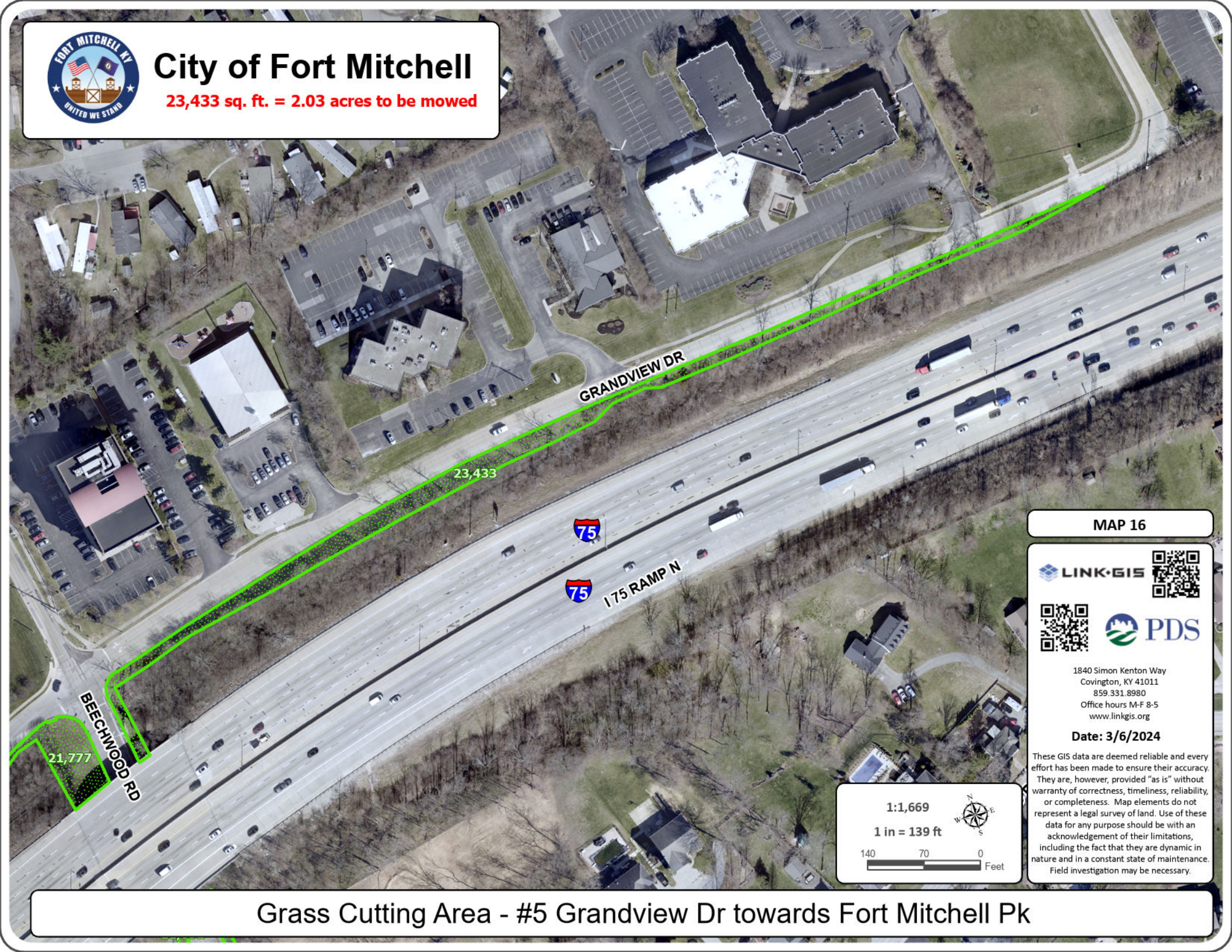


Grass Cutting Area - Royal Dr & Buttermilk Pk.



City of Fort Mitchell

23,433 sq. ft. = 2.03 acres to be mowed



MAP 16

LINK·GIS



PDS

1840 Simon Kenton Way
Covington, KY 41011
859.331.8980
Office hours M-F 8-5
www.linkgis.org

Date: 3/6/2024

These GIS data are deemed reliable and every effort has been made to ensure their accuracy. They are, however, provided "as is" without warranty of correctness, timeliness, reliability, or completeness. Map elements do not represent a legal survey of land. Use of these data for any purpose should be with an acknowledgement of their limitations, including the fact that they are dynamic in nature and in a constant state of maintenance. Field investigation may be necessary.

1:1,669

1 in = 139 ft

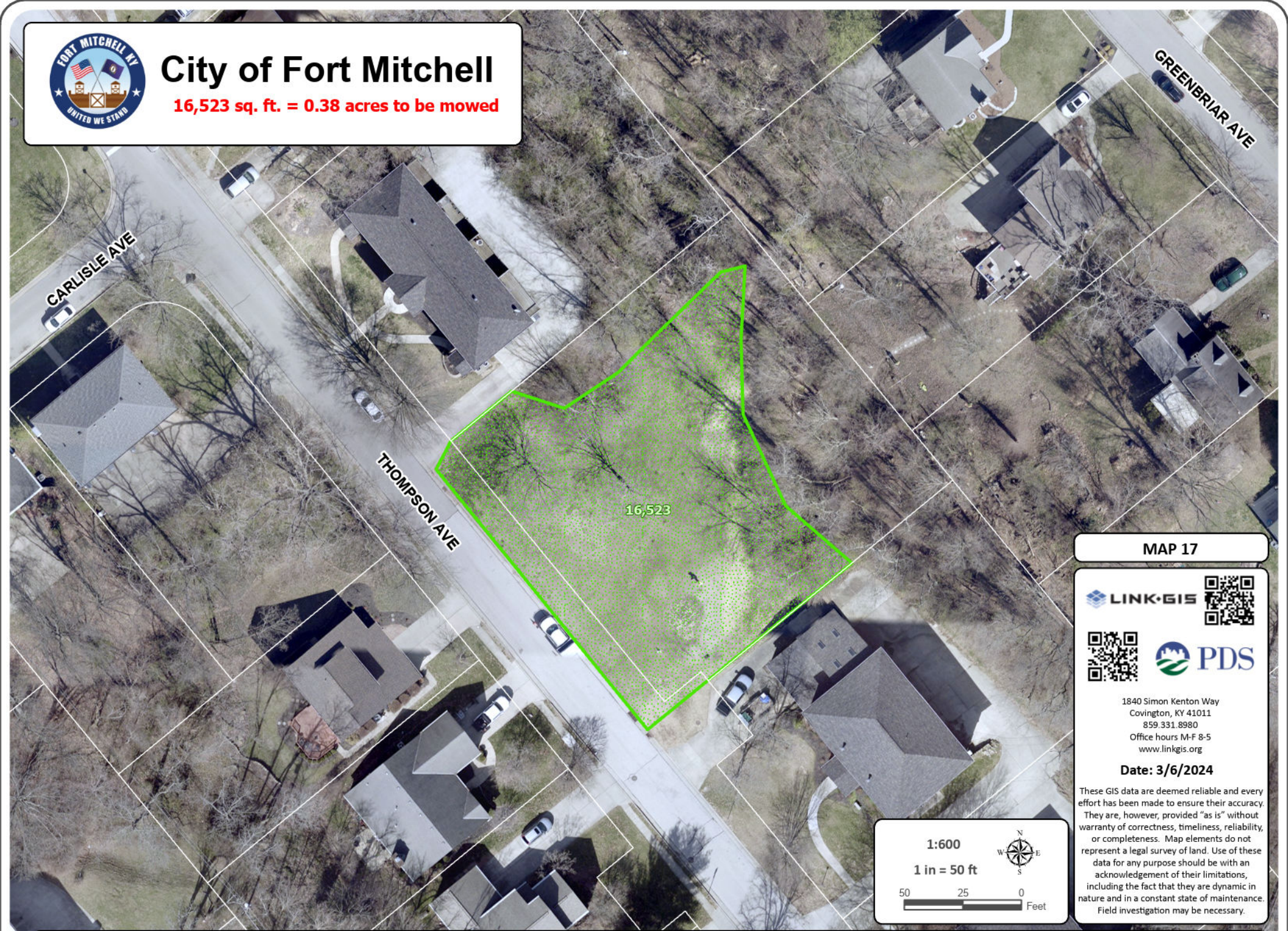


Grass Cutting Area - #5 Grandview Dr towards Fort Mitchell Pk



City of Fort Mitchell

16,523 sq. ft. = 0.38 acres to be mowed



MAP 17



1840 Simon Kenton Way
Covington, KY 41011
859.331.8980
Office hours M-F 8-5
www.linkgis.org

Date: 3/6/2024

These GIS data are deemed reliable and every effort has been made to ensure their accuracy. They are, however, provided "as is" without warranty of correctness, timeliness, reliability, or completeness. Map elements do not represent a legal survey of land. Use of these data for any purpose should be with an acknowledgement of their limitations, including the fact that they are dynamic in nature and in a constant state of maintenance. Field investigation may be necessary.

1:600



1 in = 50 ft

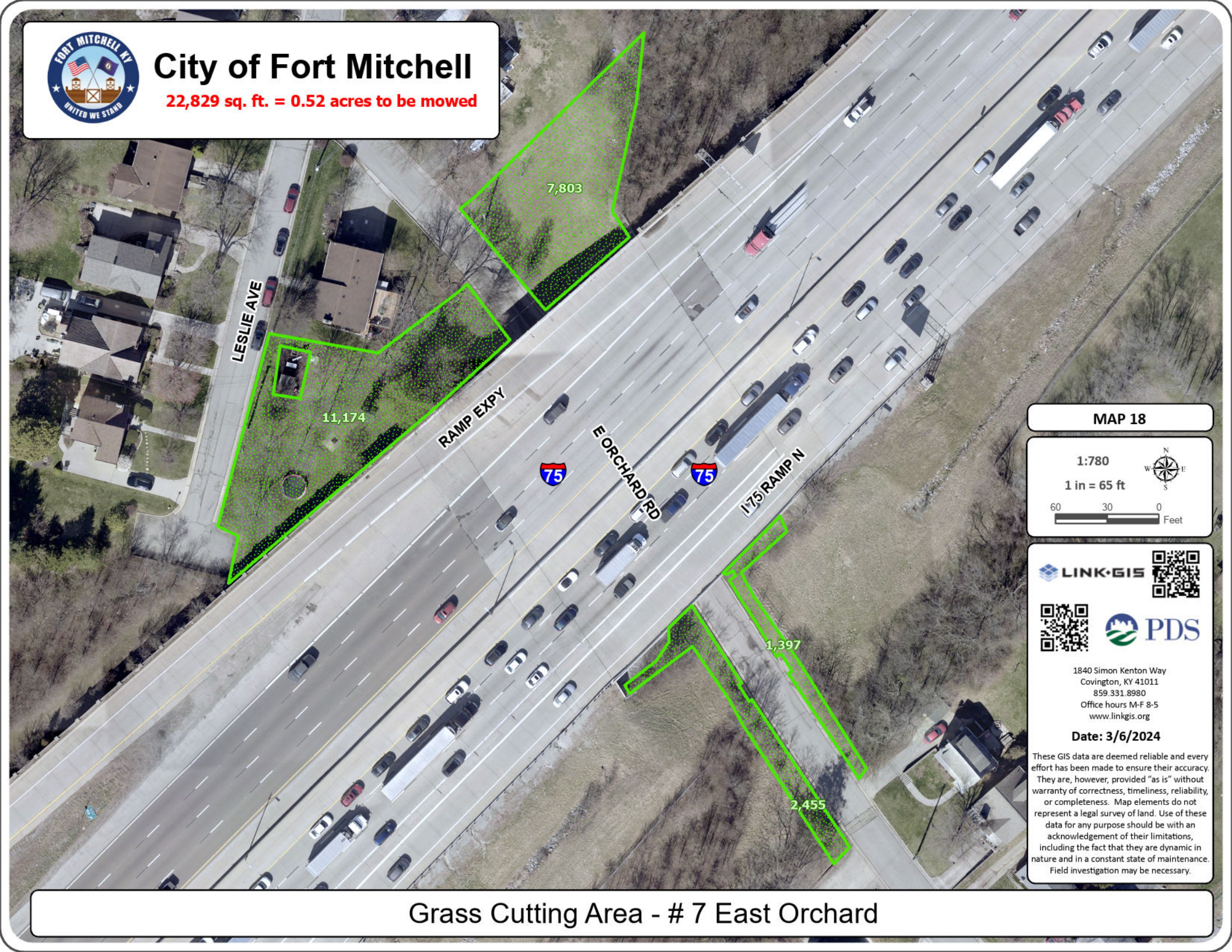


Grass Cutting Area - #6 City lot @ #58 Thompson Ave



City of Fort Mitchell

22,829 sq. ft. = 0.52 acres to be mowed



MAP 18

1:780

1 in = 65 ft



1840 Simon Kenton Way
Covington, KY 41011
859.331.8980
Office hours M-F 8-5
www.linkgis.org

Date: 3/6/2024

These GIS data are deemed reliable and every effort has been made to ensure their accuracy. They are, however, provided "as is" without warranty of correctness, timeliness, reliability, or completeness. Map elements do not represent a legal survey of land. Use of these data for any purpose should be with an acknowledgement of their limitations, including the fact that they are dynamic in nature and in a constant state of maintenance. Field investigation may be necessary.

Grass Cutting Area - # 7 East Orchard



City of Fort Mitchell

2,138 sq. ft. = 0.05 acres to be mowed



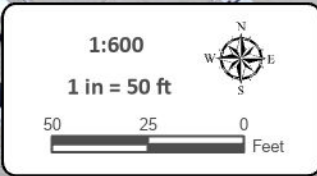
MAP 19



1840 Simon Kenton Way
Covington, KY 41011
859.331.8980
Office hours M-F 8-5
www.linkgis.org

Date: 3/6/2024

These GIS data are deemed reliable and every effort has been made to ensure their accuracy. They are, however, provided "as is" without warranty of correctness, timeliness, reliability, or completeness. Map elements do not represent a legal survey of land. Use of these data for any purpose should be with an acknowledgement of their limitations, including the fact that they are dynamic in nature and in a constant state of maintenance. Field investigation may be necessary.

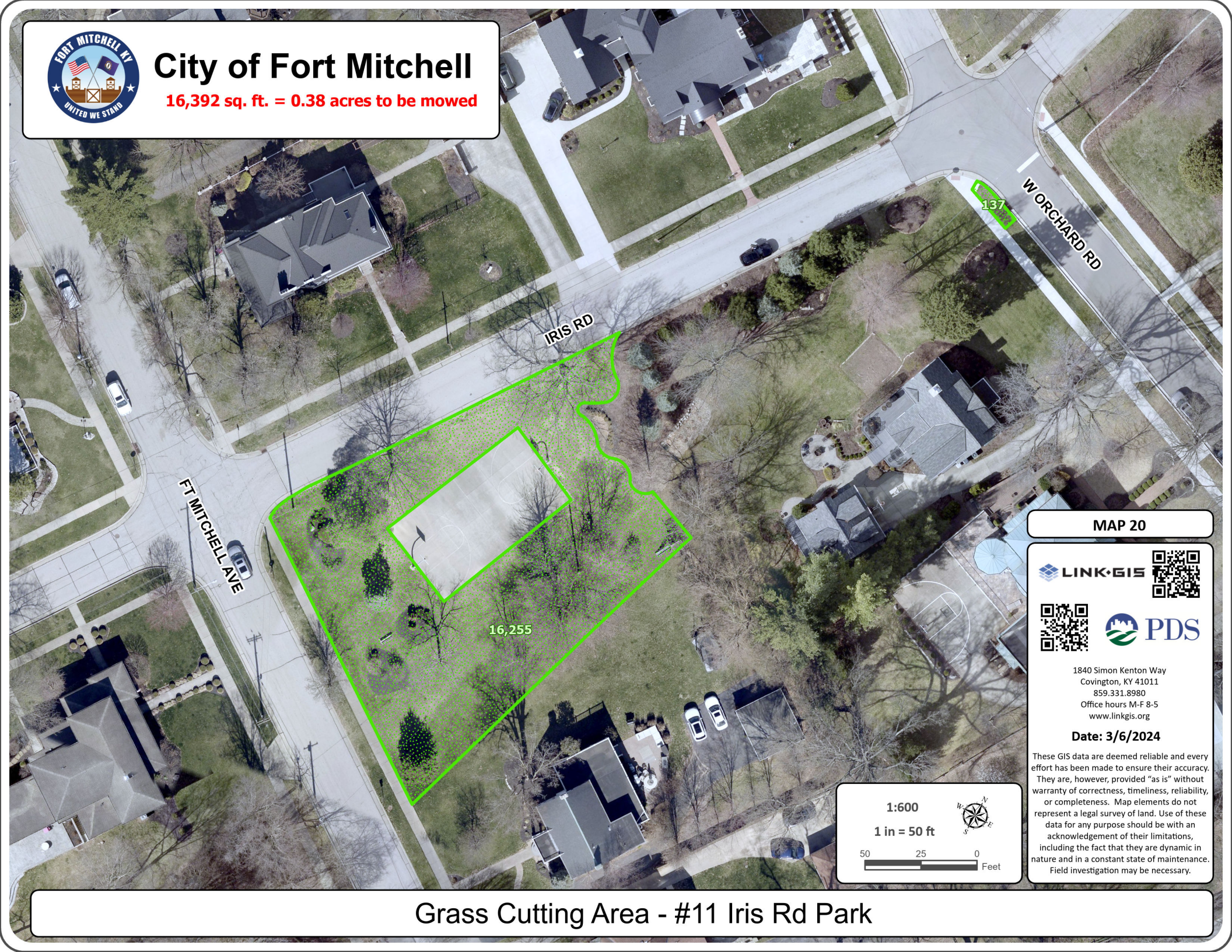


Grass Cutting Area - #9 - Stevie's Ridge Rd



City of Fort Mitchell

16,392 sq. ft. = 0.38 acres to be mowed



MAP 20



1840 Simon Kenton Way
Covington, KY 41011
859.331.8980
Office hours M-F 8-5
www.linkgis.org

Date: 3/6/2024

This GIS data are deemed reliable and every effort has been made to ensure their accuracy. They are, however, provided "as is" without warranty of correctness, timeliness, reliability, or completeness. Map elements do not represent a legal survey of land. Use of these data for any purpose should be with an acknowledgement of their limitations, including the fact that they are dynamic in nature and in a constant state of maintenance. Field investigation may be necessary.

1:600

1 in = 50 ft

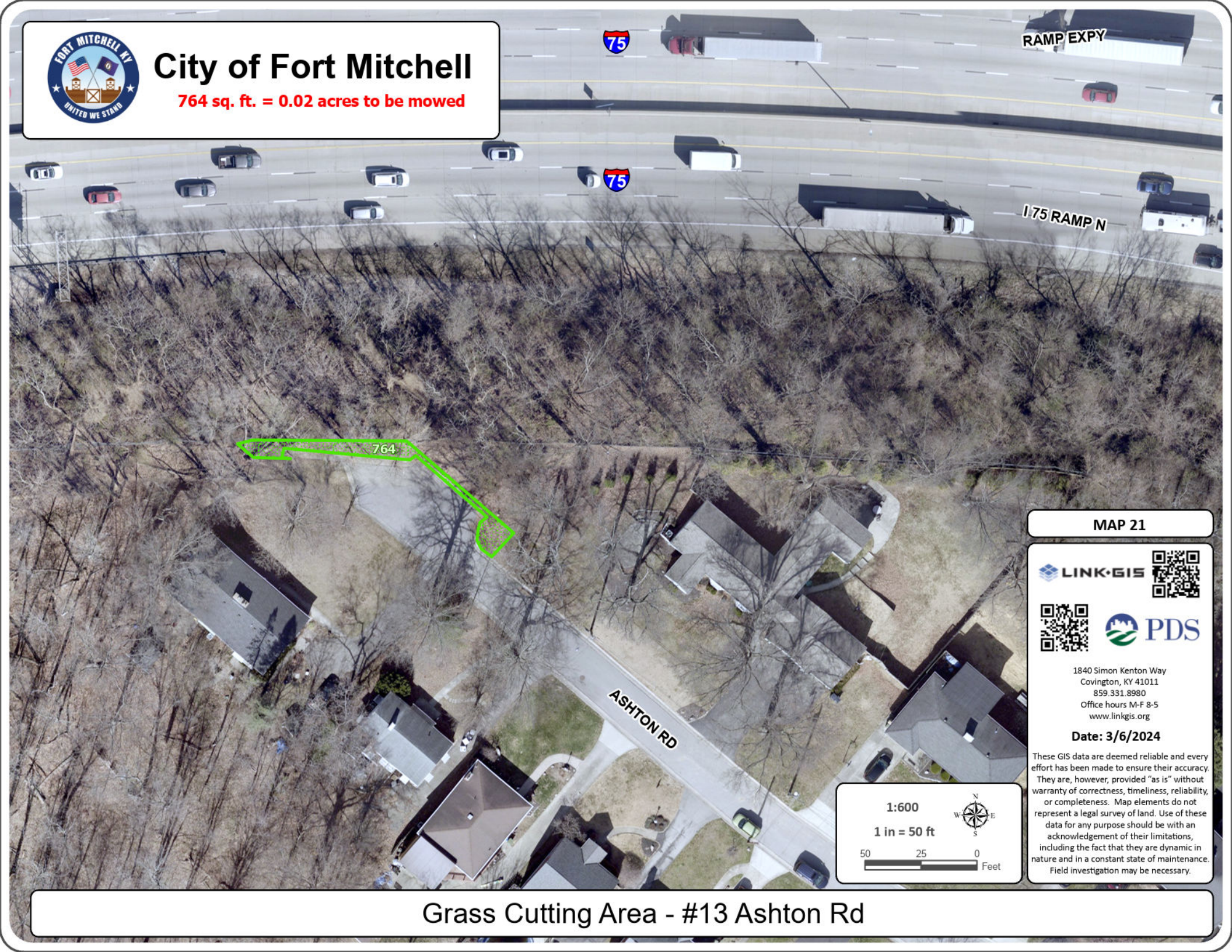


Grass Cutting Area - #11 Iris Rd Park



City of Fort Mitchell

764 sq. ft. = 0.02 acres to be mowed



MAP 21



1840 Simon Kenton Way
Covington, KY 41011
859.331.8980
Office hours M-F 8-5
www.linkgis.org

Date: 3/6/2024

These GIS data are deemed reliable and every effort has been made to ensure their accuracy. They are, however, provided "as is" without warranty of correctness, timeliness, reliability, or completeness. Map elements do not represent a legal survey of land. Use of these data for any purpose should be with an acknowledgement of their limitations, including the fact that they are dynamic in nature and in a constant state of maintenance. Field investigation may be necessary.

1:600

1 in = 50 ft

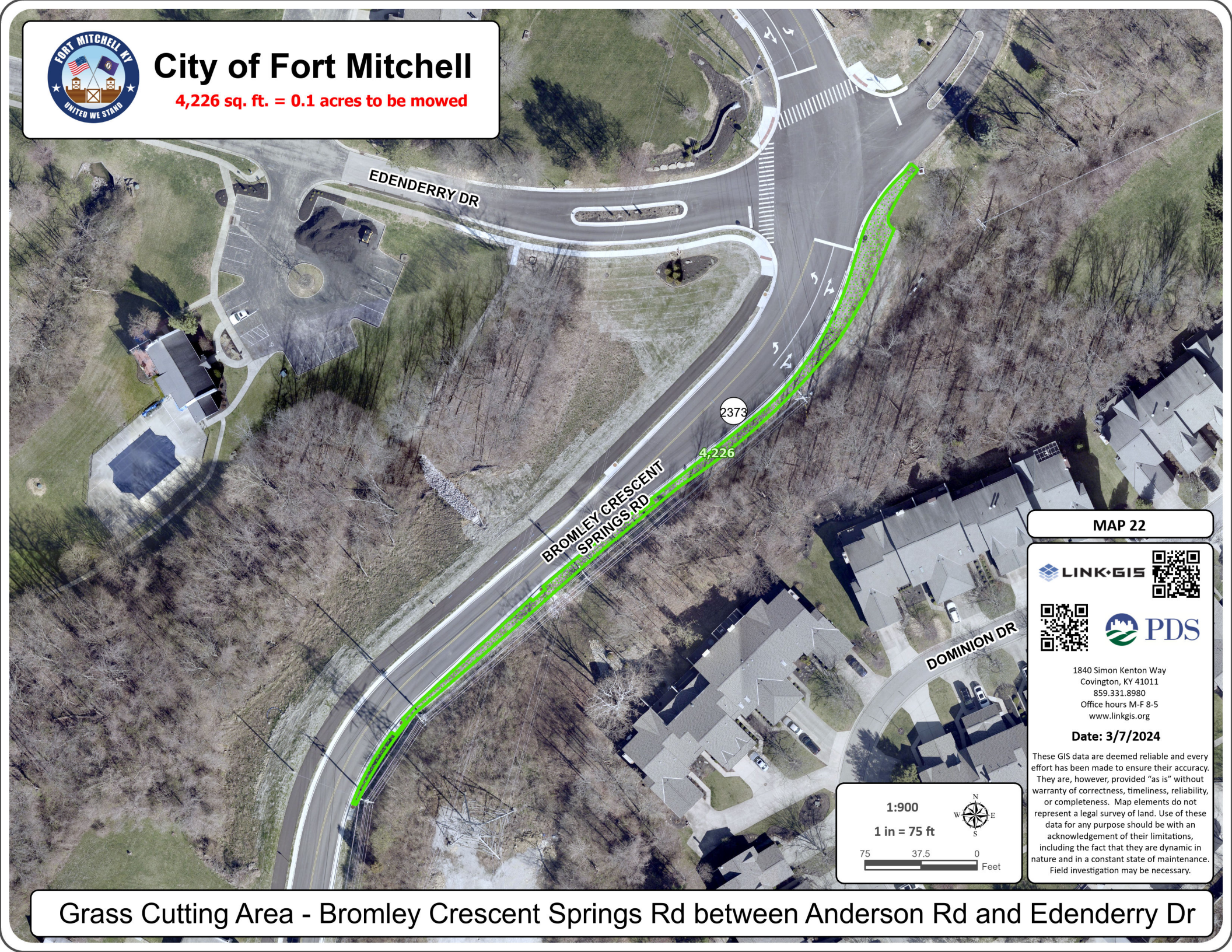


Grass Cutting Area - #13 Ashton Rd



City of Fort Mitchell

4,226 sq. ft. = 0.1 acres to be mowed



MAP 22



1840 Simon Kenton Way
Covington, KY 41011
859.331.8980
Office hours M-F 8-5
www.linkgis.org

Date: 3/7/2024

These GIS data are deemed reliable and every effort has been made to ensure their accuracy. They are, however, provided "as is" without warranty of correctness, timeliness, reliability, or completeness. Map elements do not represent a legal survey of land. Use of these data for any purpose should be with an acknowledgement of their limitations, including the fact that they are dynamic in nature and in a constant state of maintenance. Field investigation may be necessary.

1:900



1 in = 75 ft

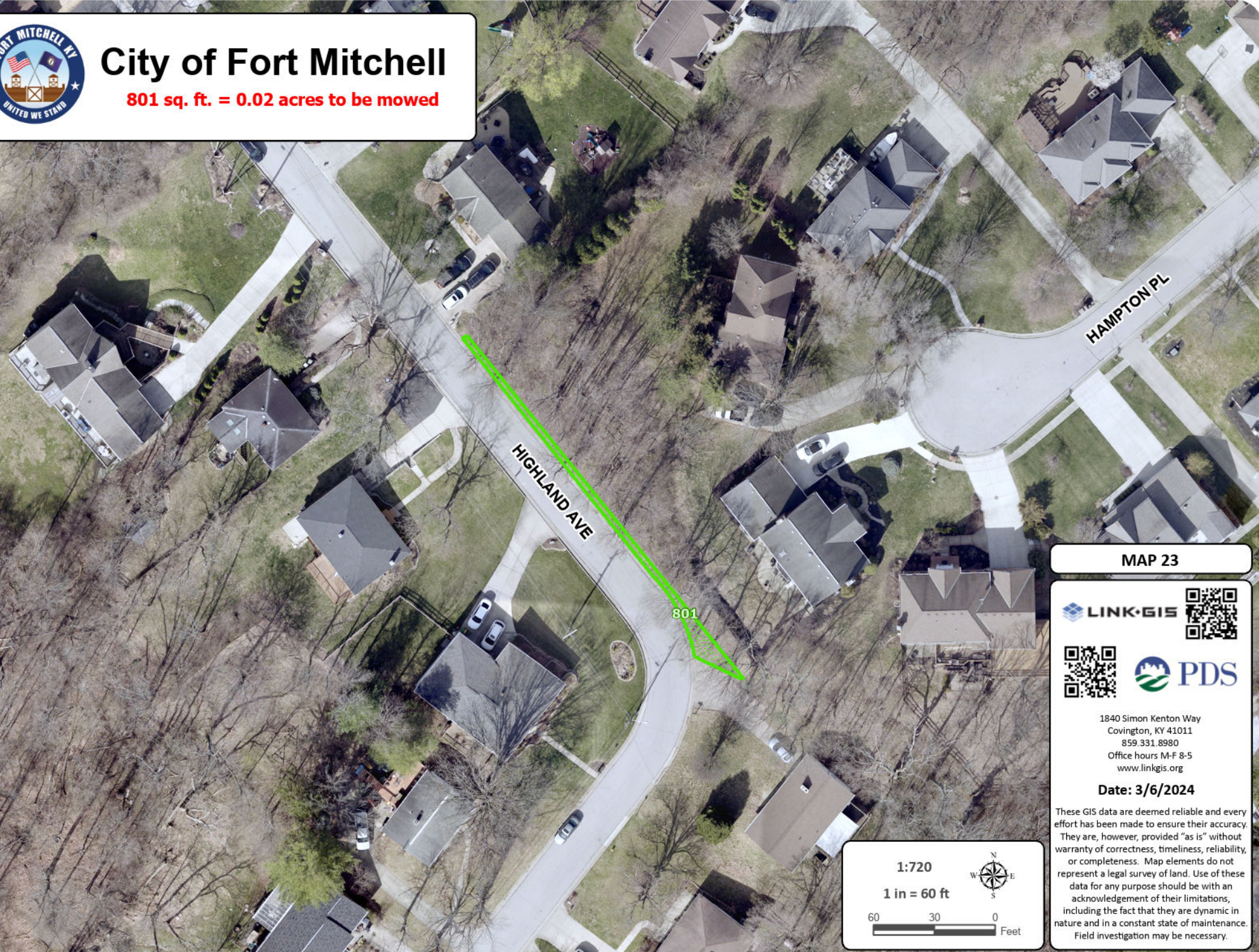


Grass Cutting Area - Bromley Crescent Springs Rd between Anderson Rd and Edenderry Dr



City of Fort Mitchell

801 sq. ft. = 0.02 acres to be mowed



MAP 23



1840 Simon Kenton Way
Covington, KY 41011
859.331.8980
Office hours M-F 8-5
www.linkgis.org

Date: 3/6/2024

These GIS data are deemed reliable and every effort has been made to ensure their accuracy. They are, however, provided "as is" without warranty of correctness, timeliness, reliability, or completeness. Map elements do not represent a legal survey of land. Use of these data for any purpose should be with an acknowledgement of their limitations, including the fact that they are dynamic in nature and in a constant state of maintenance. Field investigation may be necessary.

1:720

1 in = 60 ft

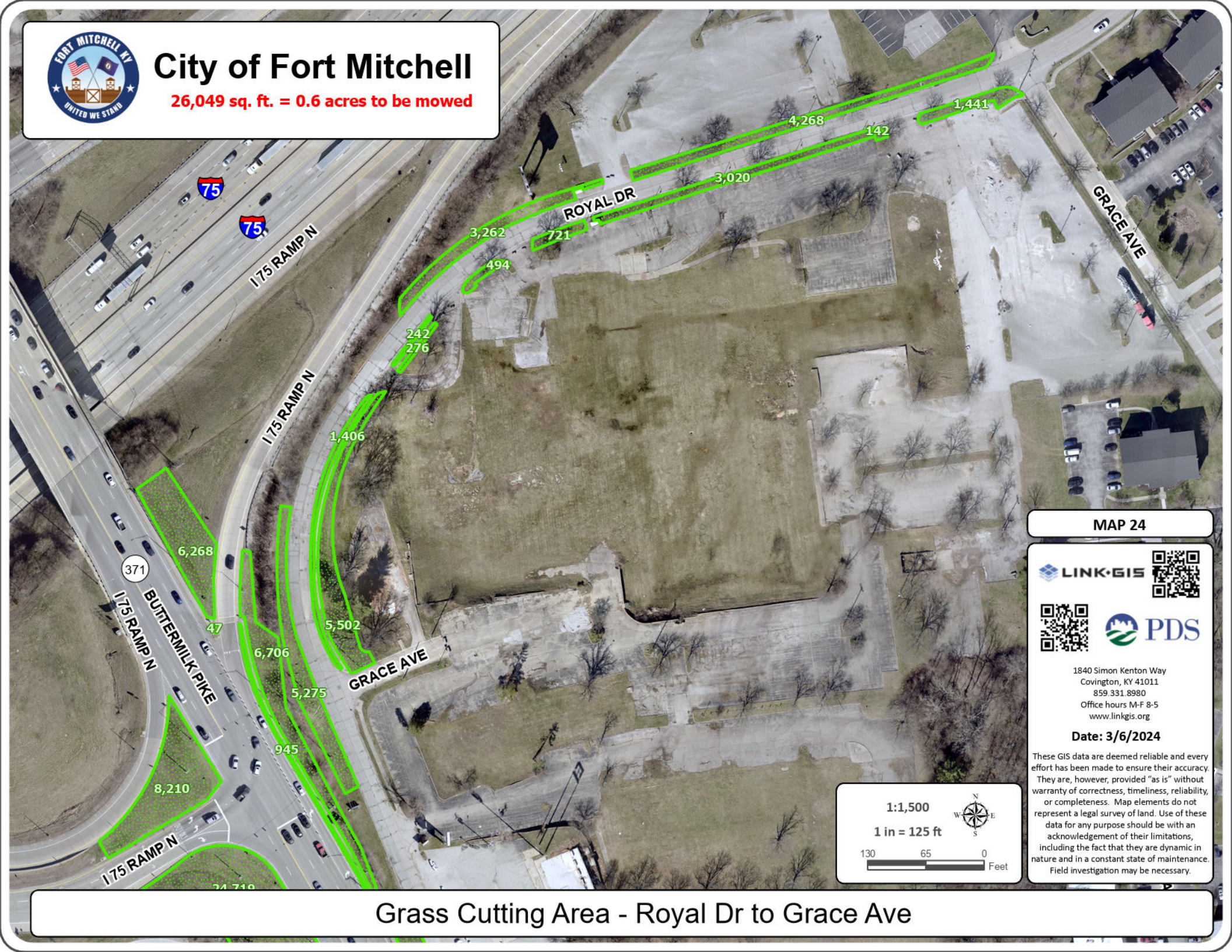


Grass Cutting Area - Bend on Highland Ave at the retaining wall



City of Fort Mitchell

26,049 sq. ft. = 0.6 acres to be mowed



MAP 24



1840 Simon Kenton Way
Covington, KY 41011
859.331.8980
Office hours M-F 8-5
www.linkgis.org

Date: 3/6/2024

These GIS data are deemed reliable and every effort has been made to ensure their accuracy. They are, however, provided "as is" without warranty of correctness, timeliness, reliability, or completeness. Map elements do not represent a legal survey of land. Use of these data for any purpose should be with an acknowledgement of their limitations, including the fact that they are dynamic in nature and in a constant state of maintenance. Field investigation may be necessary.

1:1,500

1 in = 125 ft



Grass Cutting Area - Royal Dr to Grace Ave